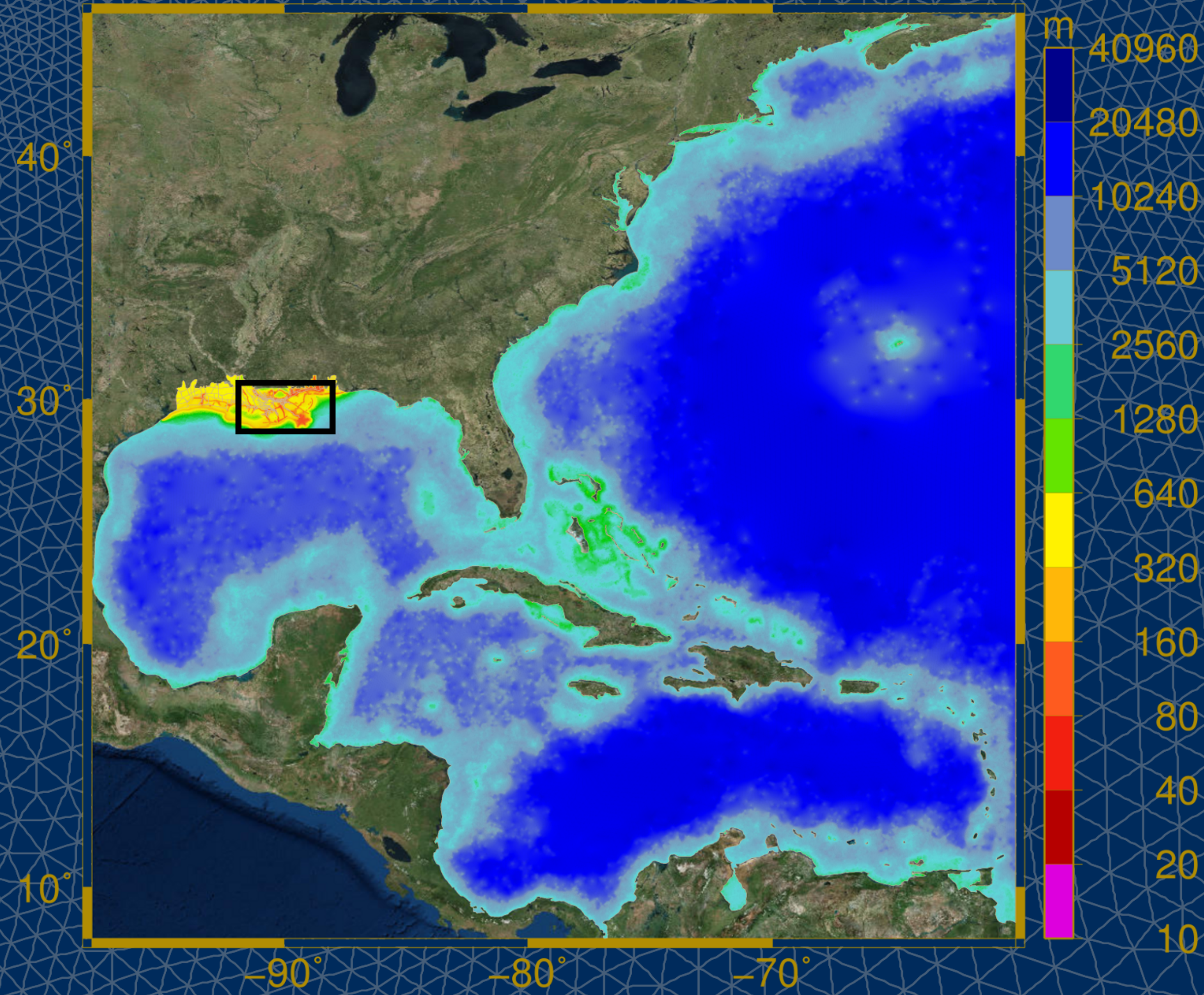
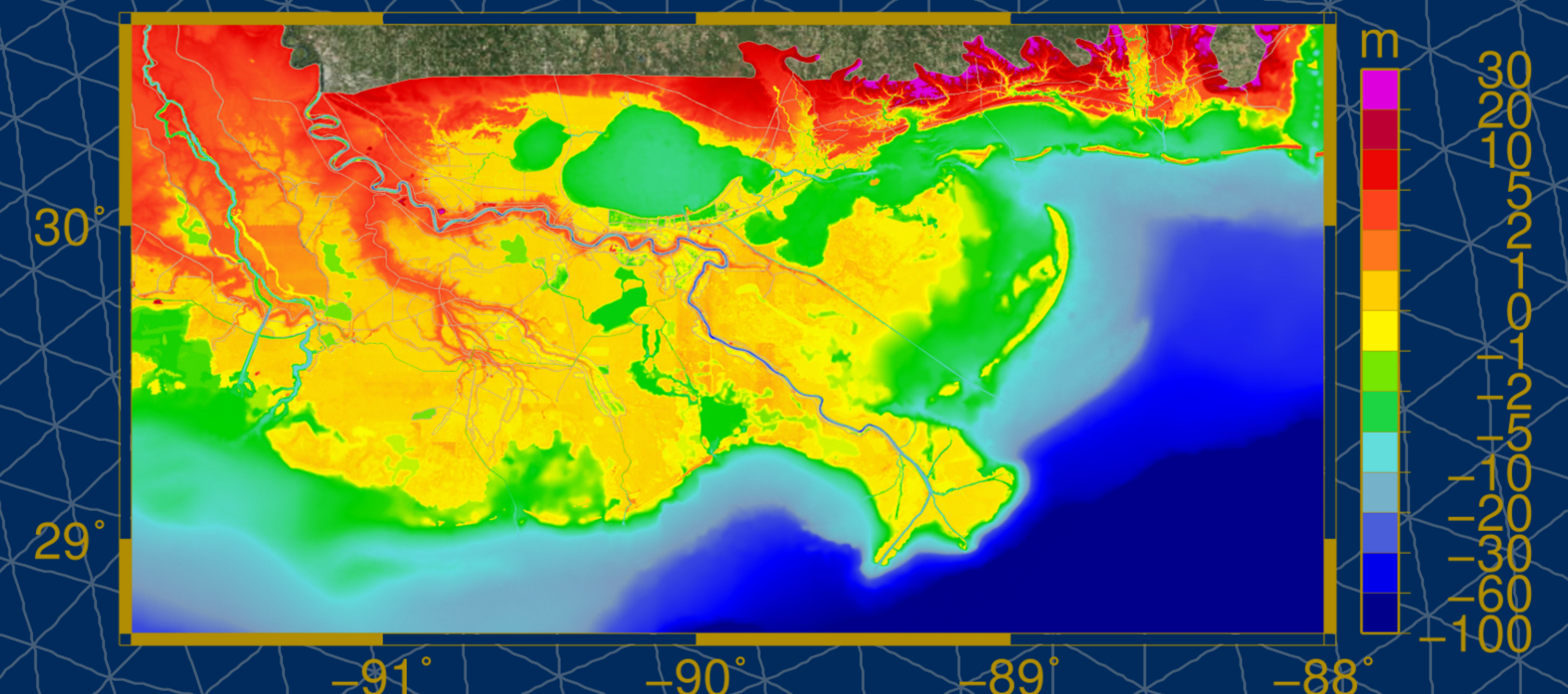
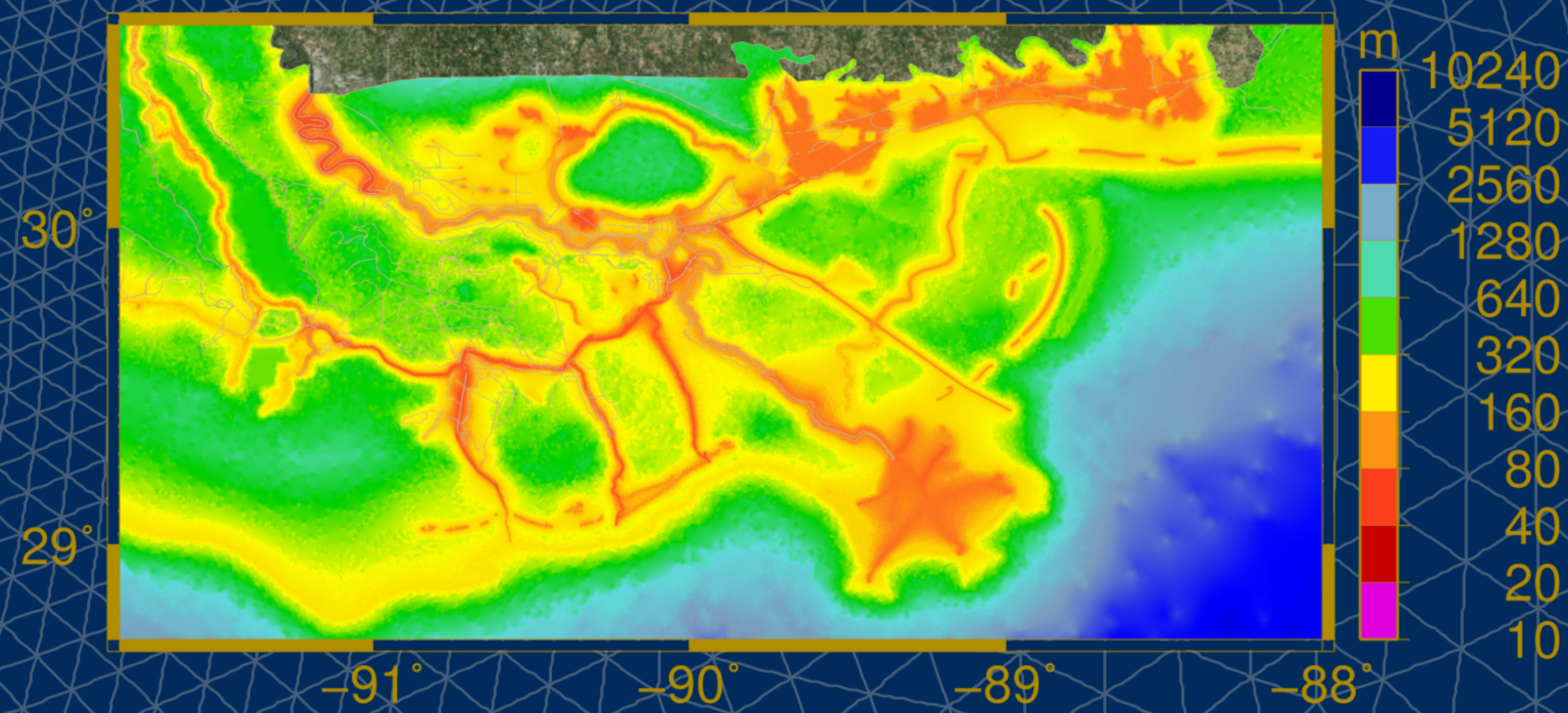
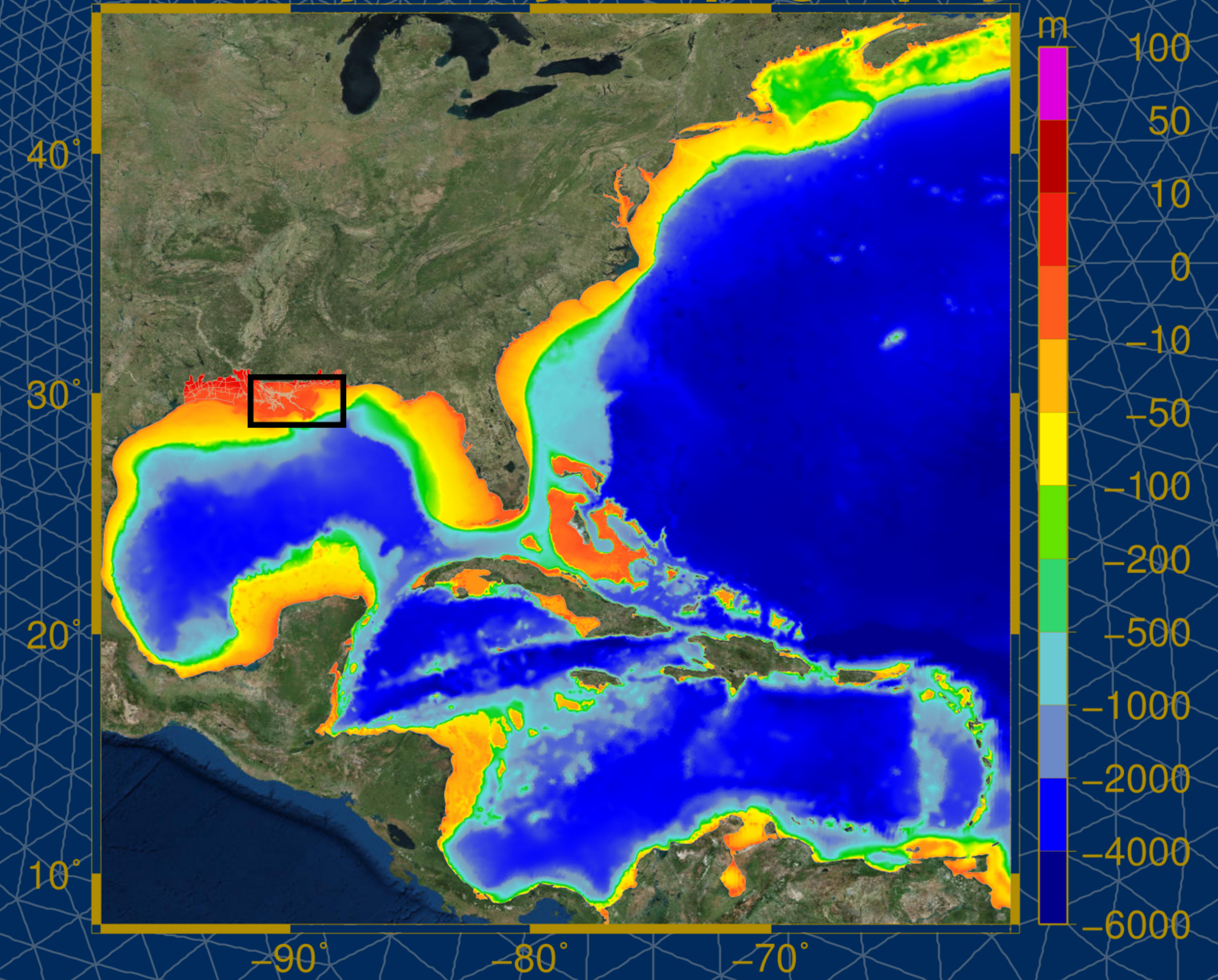


SL15

Grid Size



Bathymetry / Topography



Number of Elements: 4,721,496
Number of Nodes: 2,409,635
Minimum Resolution: 30 m
Maximum Resolution: 31.3 km
Created: 2009

Refined mesh of Southern Louisiana for computing tides, riverine flows and hurricane storm surge coupled with the WAM and STWAVE wave models.

Dietrich et al., 2010.
Bunya et al., 2010.