

Illustrator CS4 Printing Guide

Digital
Printing Studio

Center for Creative Computing

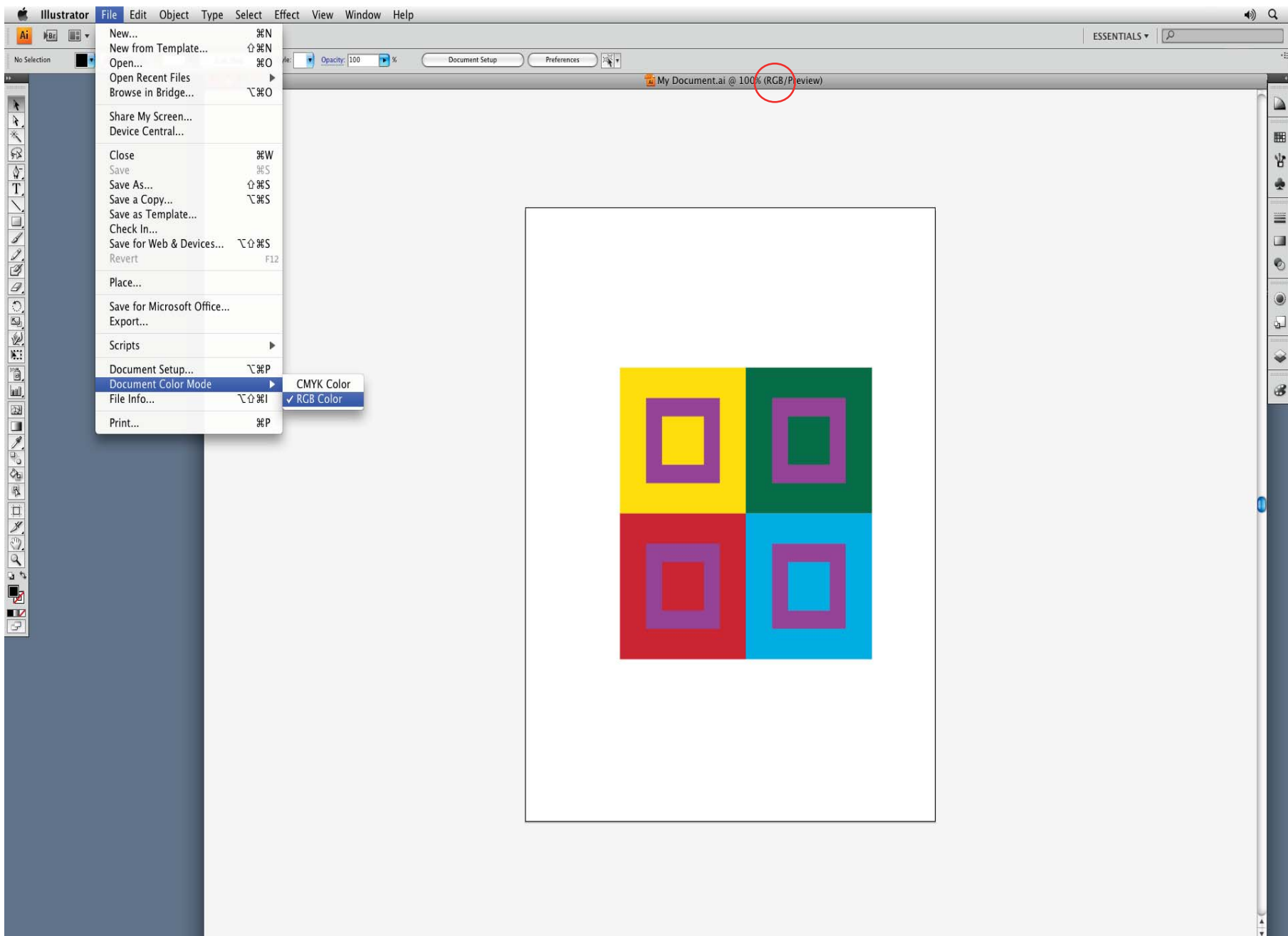
Spring 2010

Before you begin:

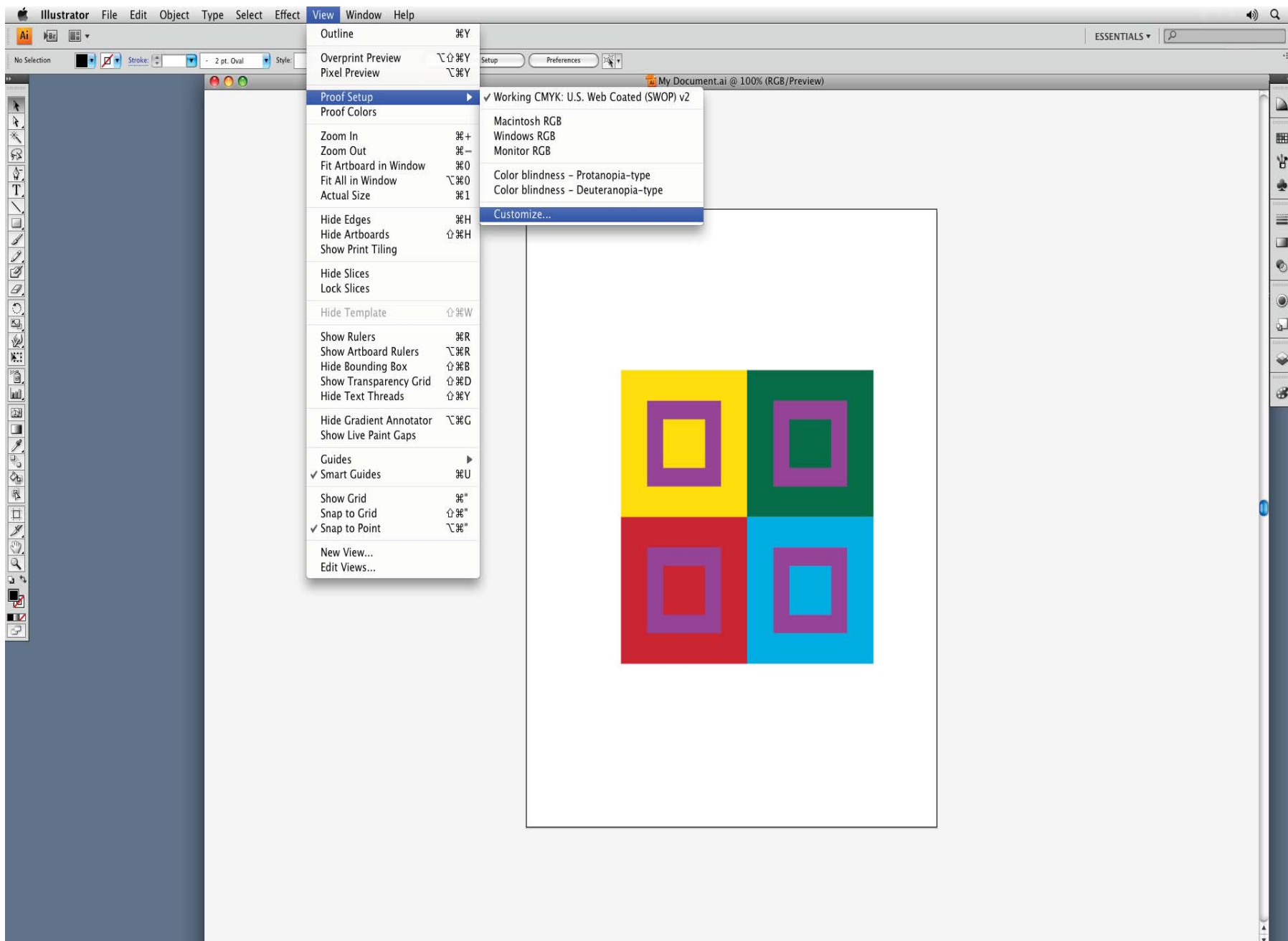
This document is intended as guide. Users are responsible for the output of their own work. Successful capture and file management are necessary components for accurate output.

Please note:

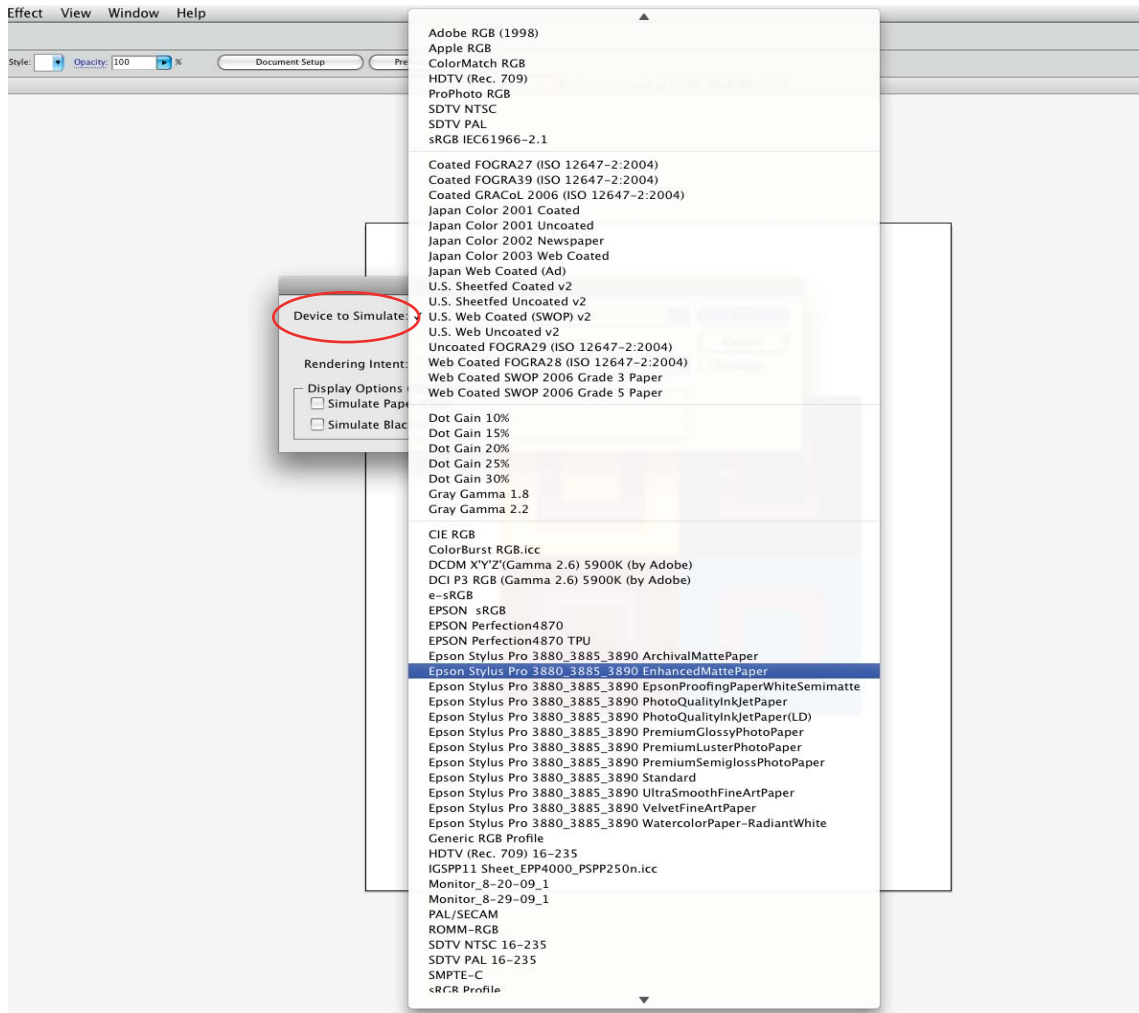
Paper selection and rendering intent in this document (Epson Stylus Pro 3880_3885_3890 EnhancedMatte Paper / Perceptual) are EXAMPLES and vary depending upon user preference and application requirements.



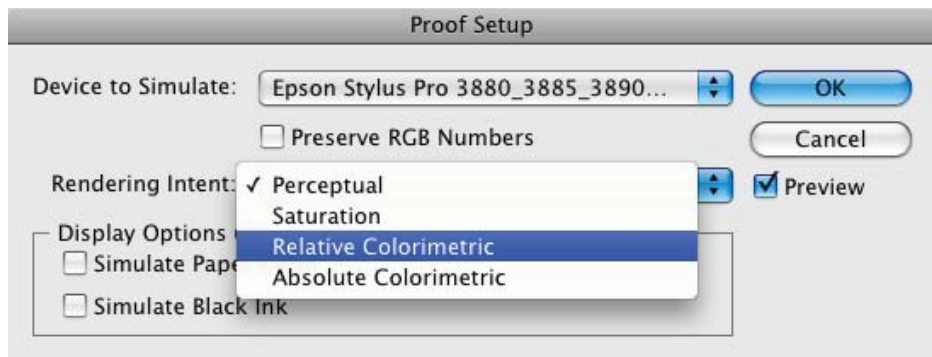
To begin, select DOCUMENT COLOR MODE > RGB COLOR from the FILE drop down menu.
(The window title reflects this change.)



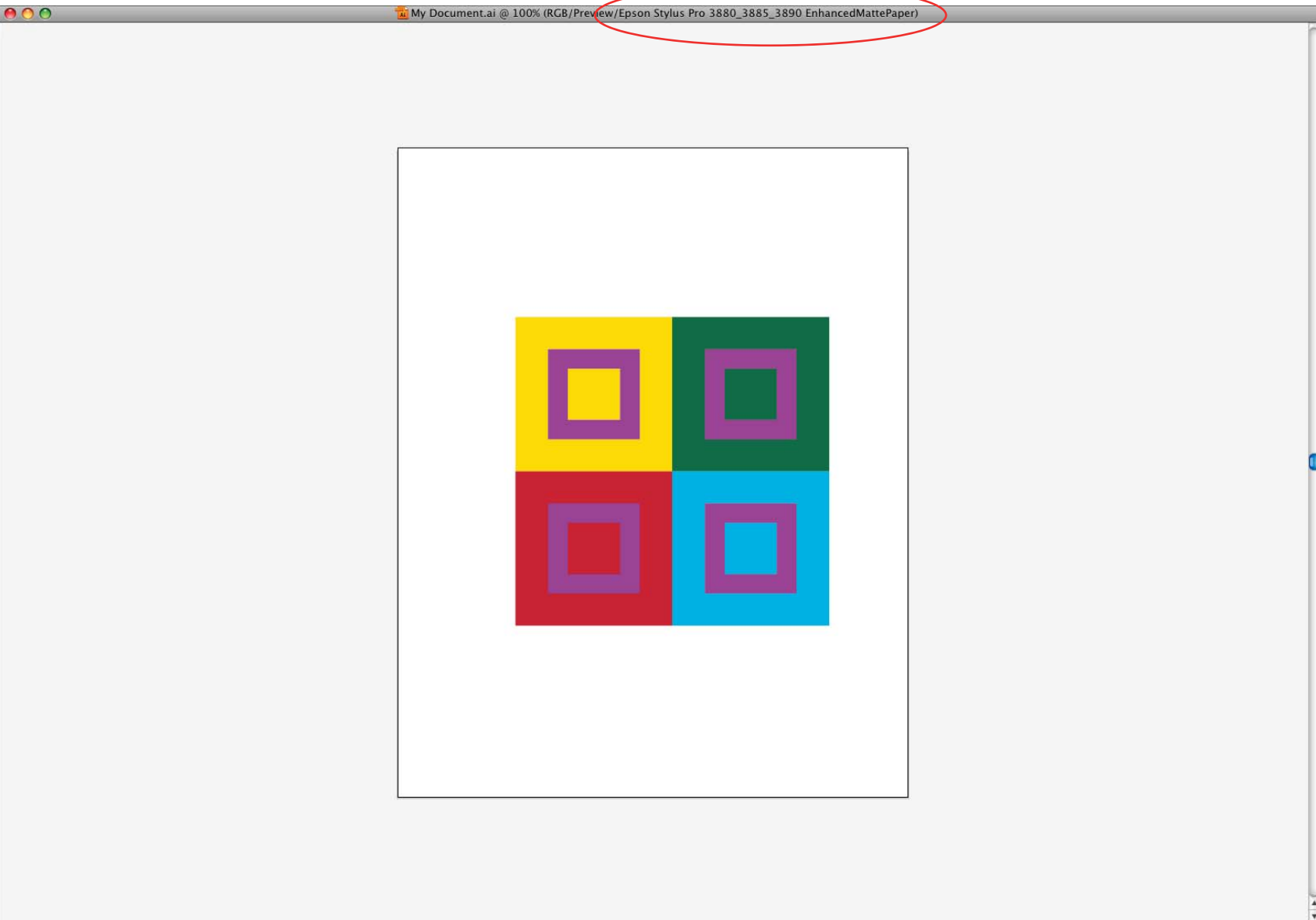
From the VIEW menu, select the PROOF SETUP > CUSTOMIZE.



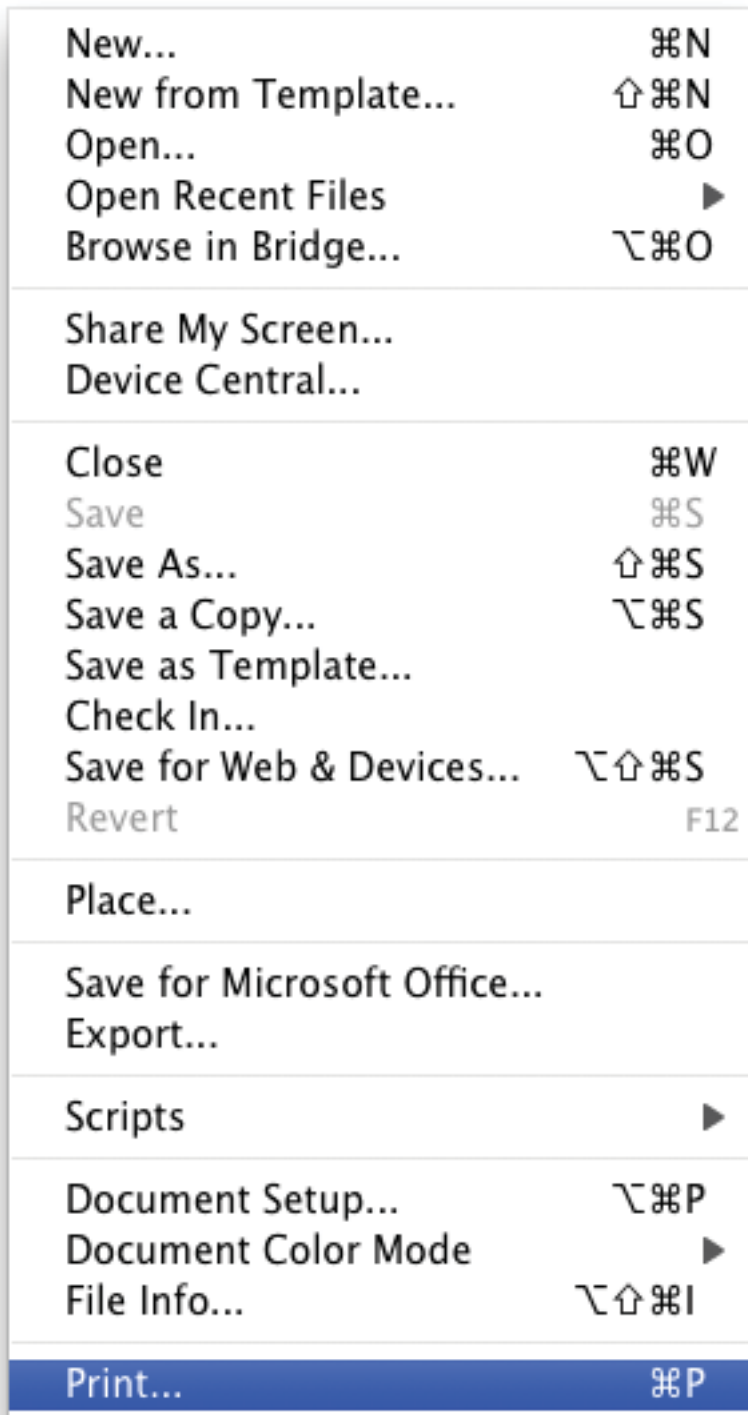
Set the DEVICE TO SIMULATE as
Epson Stylus Pro 3880_3885_3890 EnhancedMattePaper.



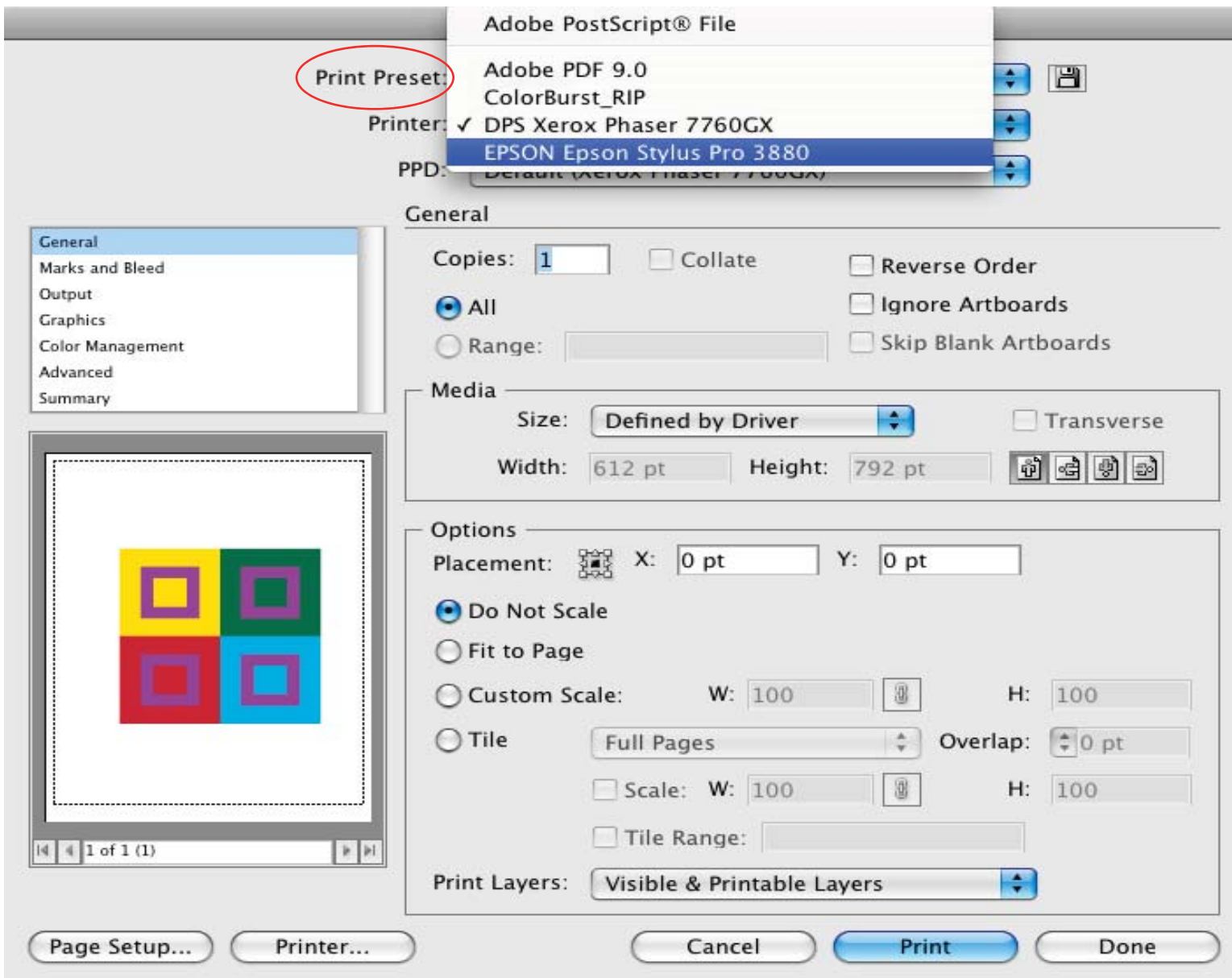
Set the RENDERING INTENT to RELATIVE COLORIMETRIC.
Select OK.



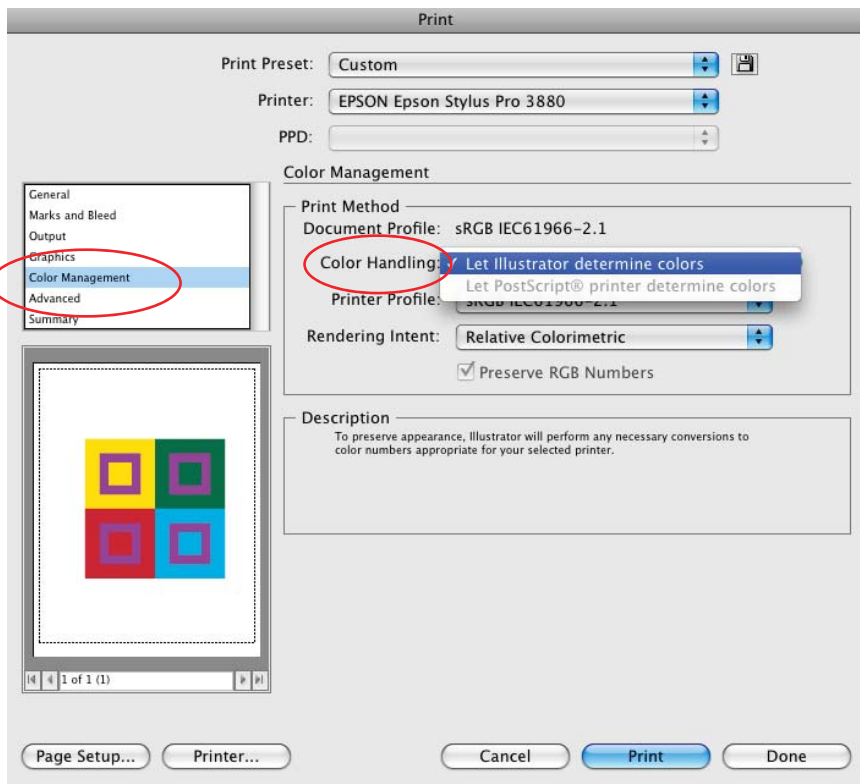
Note the change in your window title.
Make adjustments to any shifts in color.



From the FILE menu, select PRINT.

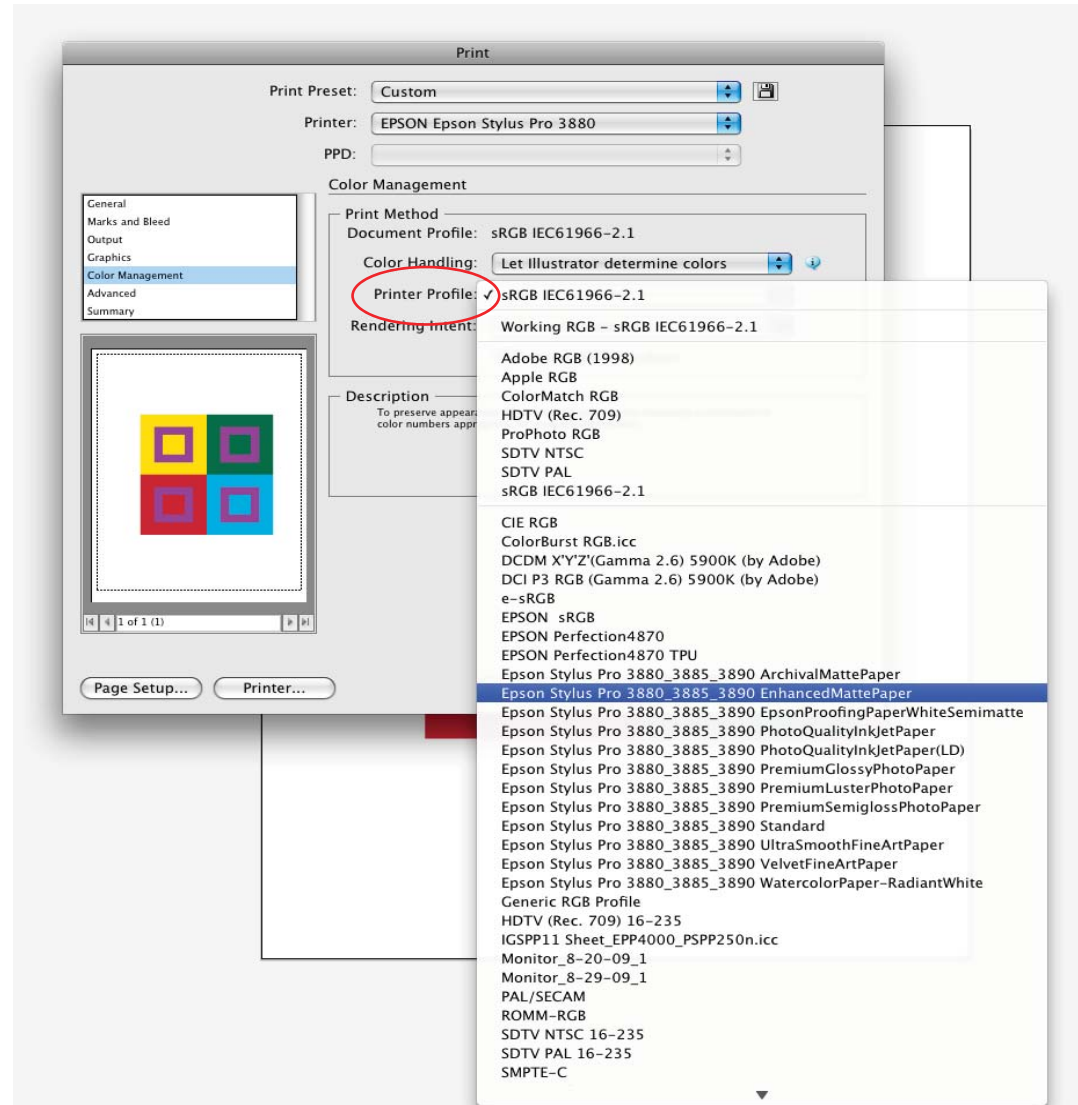


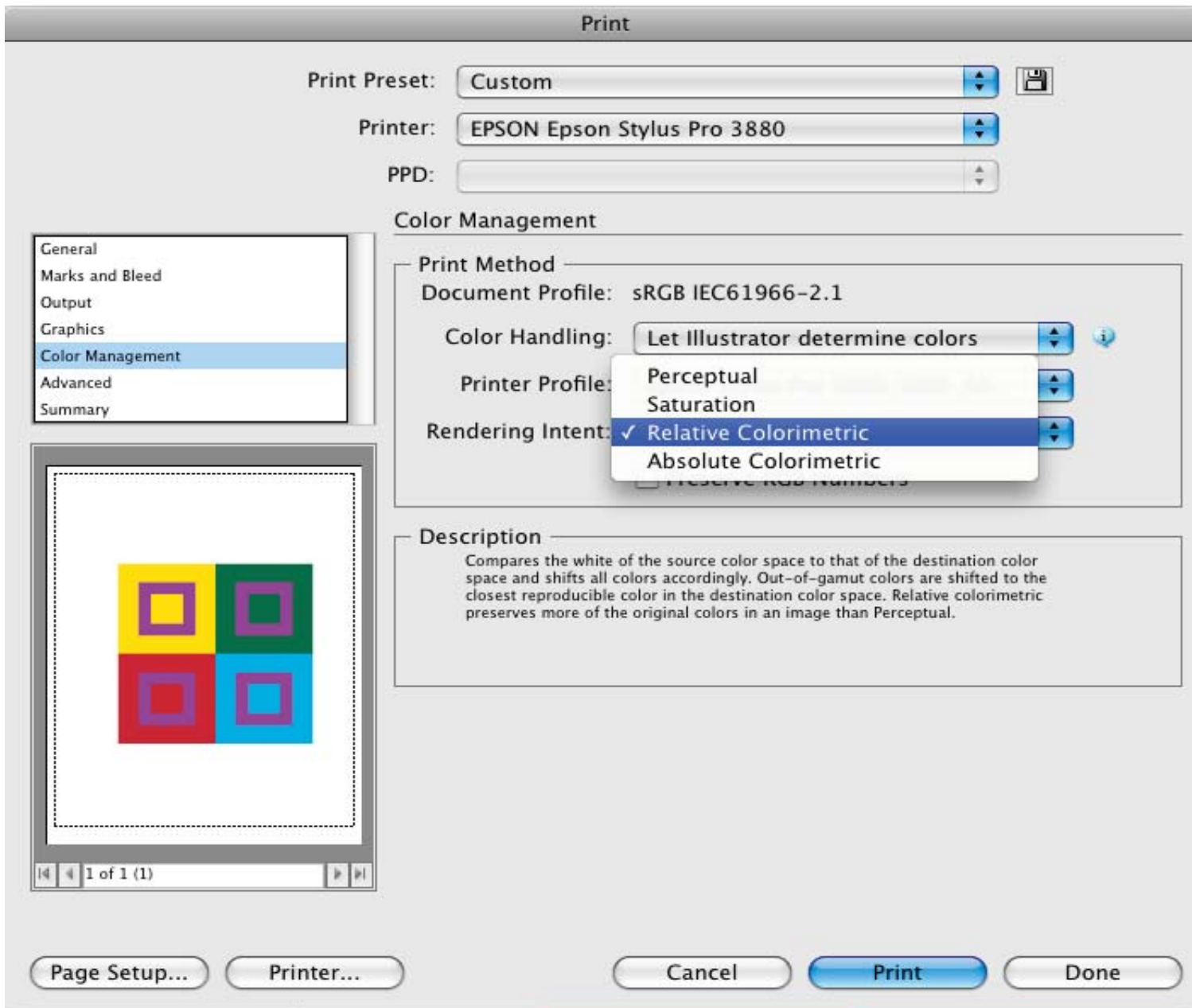
From PRINT PRESET select the EPSON Epson Stylus Pro 3880 printer.



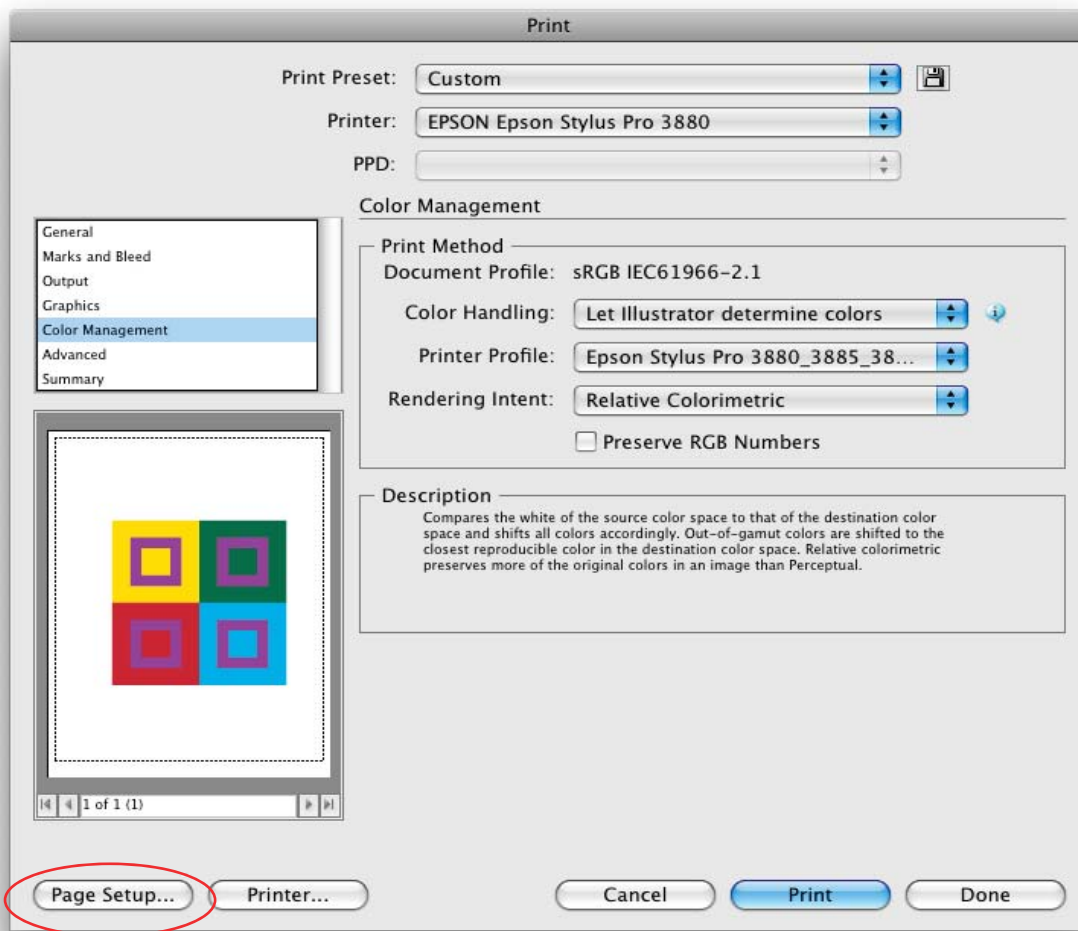
Select COLOR MANAGEMENT from the list box.
Select LET ILLUSTRATOR DETERMINE COLORS from
the COLOR HANDLING menu.

Next to PRINTER PROFILE, select
Epson Stylus Pro 3880_3885_3890 EnhancedMattePaper.



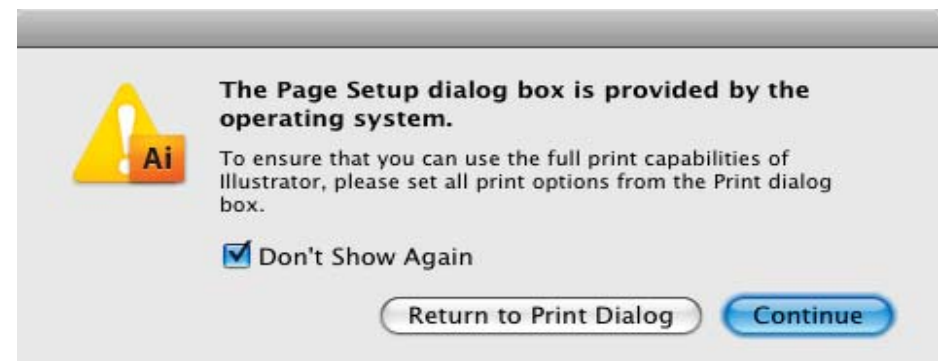


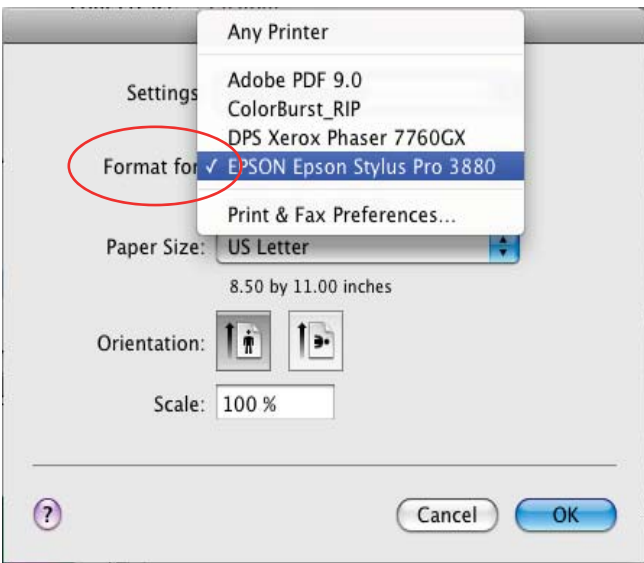
Select RELATIVE COLORIMETRIC from the RENDERING INTENT menu.



Select PAGE SETUP.

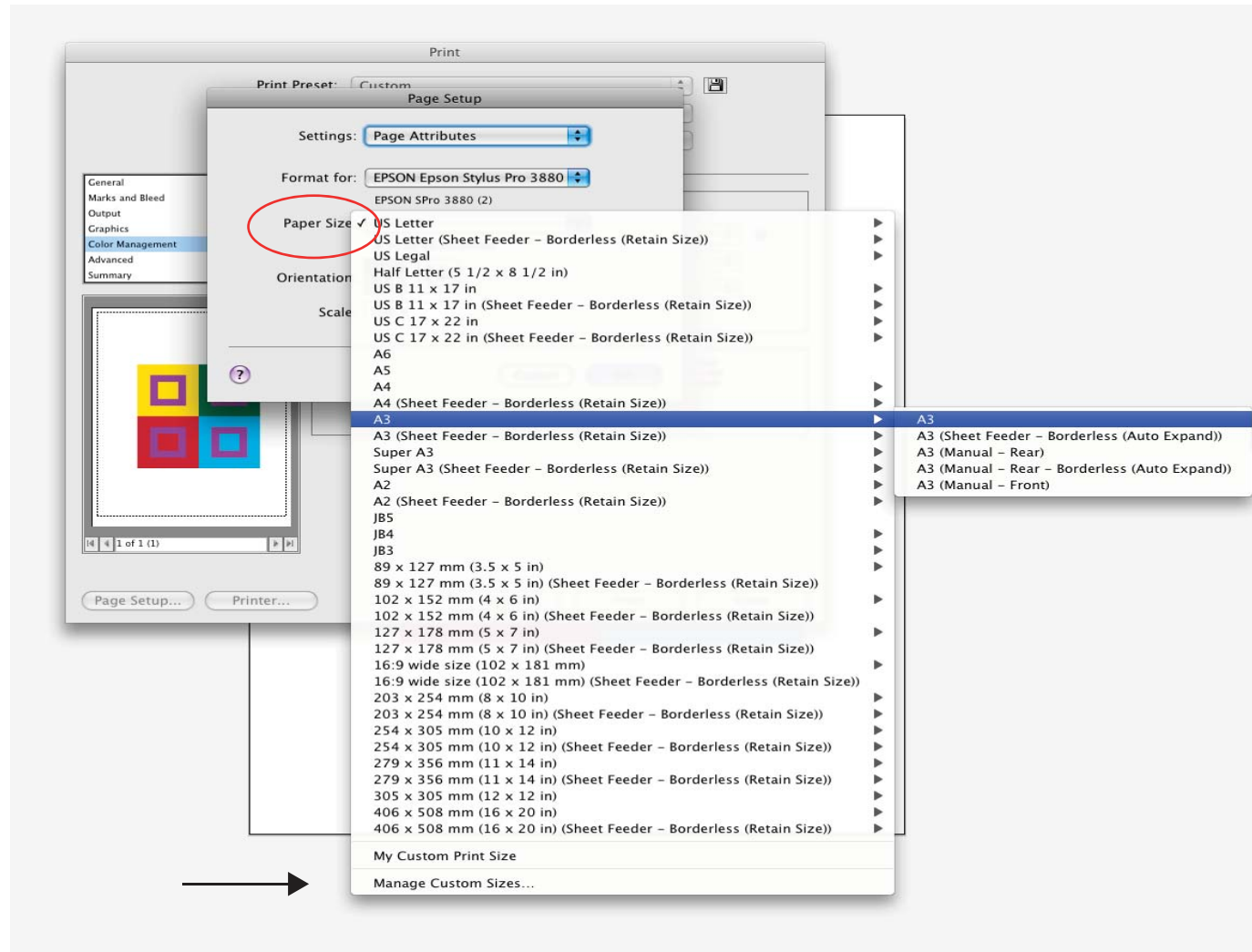
A dialog box appears.
Check DON'T SHOW AGAIN.
Select CONTINUE.



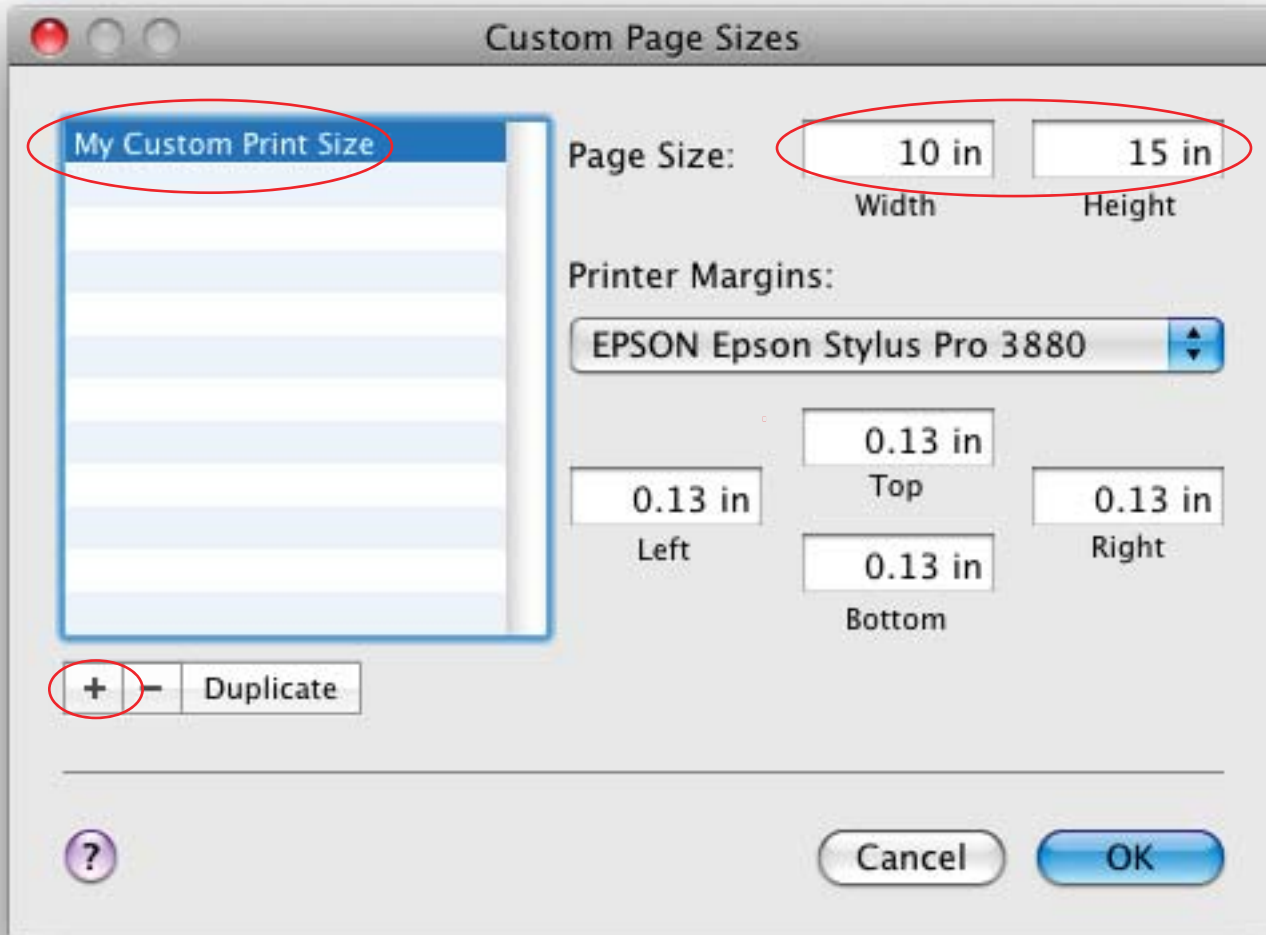


From the FORMAT FOR menu, select the EPSON Epson Stylus Pro 3880 printer.

From the PAPER SIZE menu, select the paper size to be used.



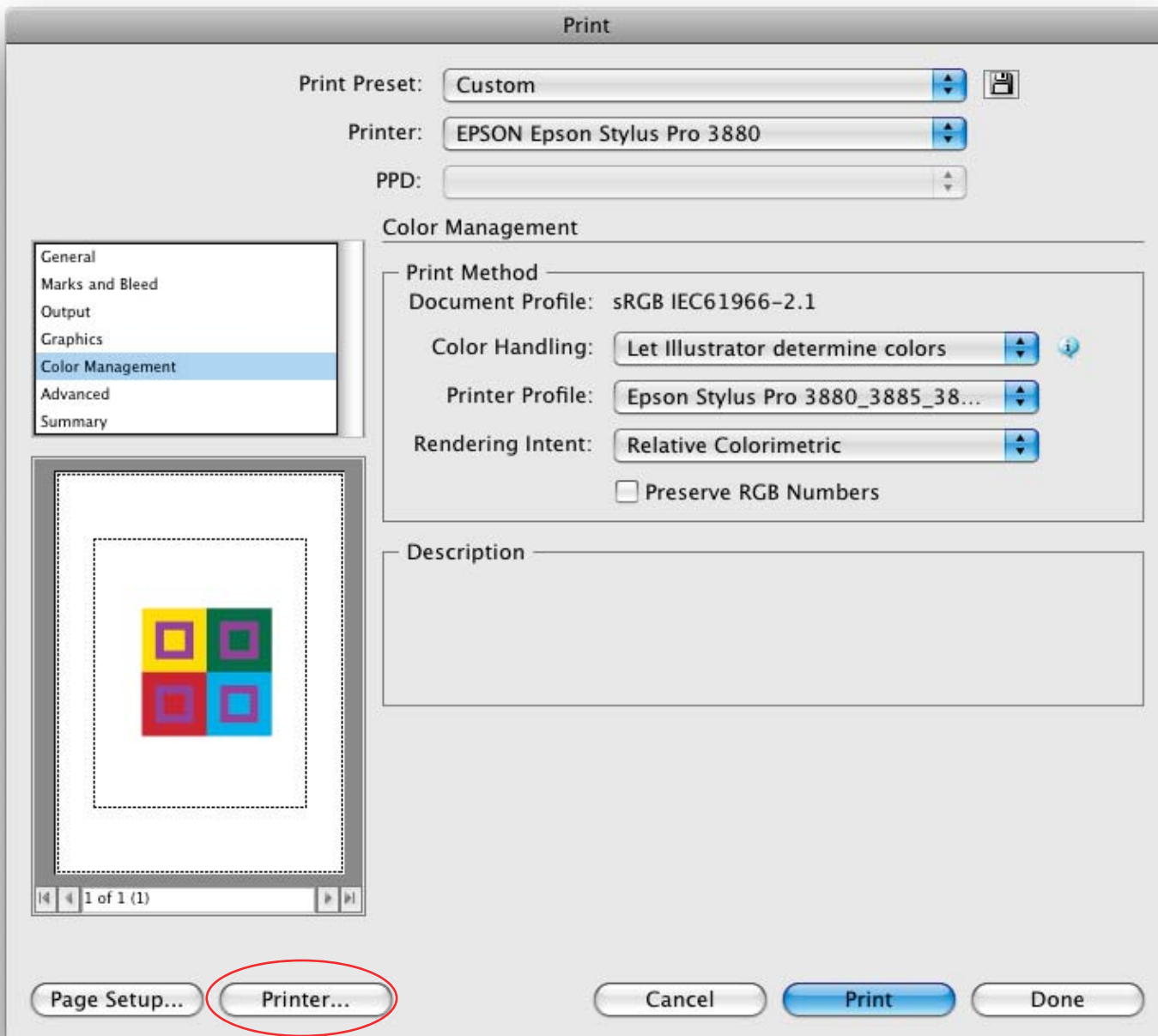
If you wish to use a custom size, select MANAGE CUSTOM SIZES. otherwise select OK.



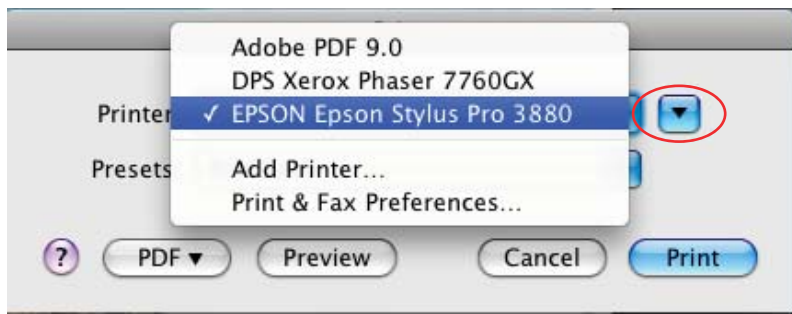
Select + to add a custom size.
Enter a name for the document.
Enter the page size in inches.

Under PRINTER MARGINS,
select the EPSON Epson Stylus Pro 3880 printer.

Select OK.

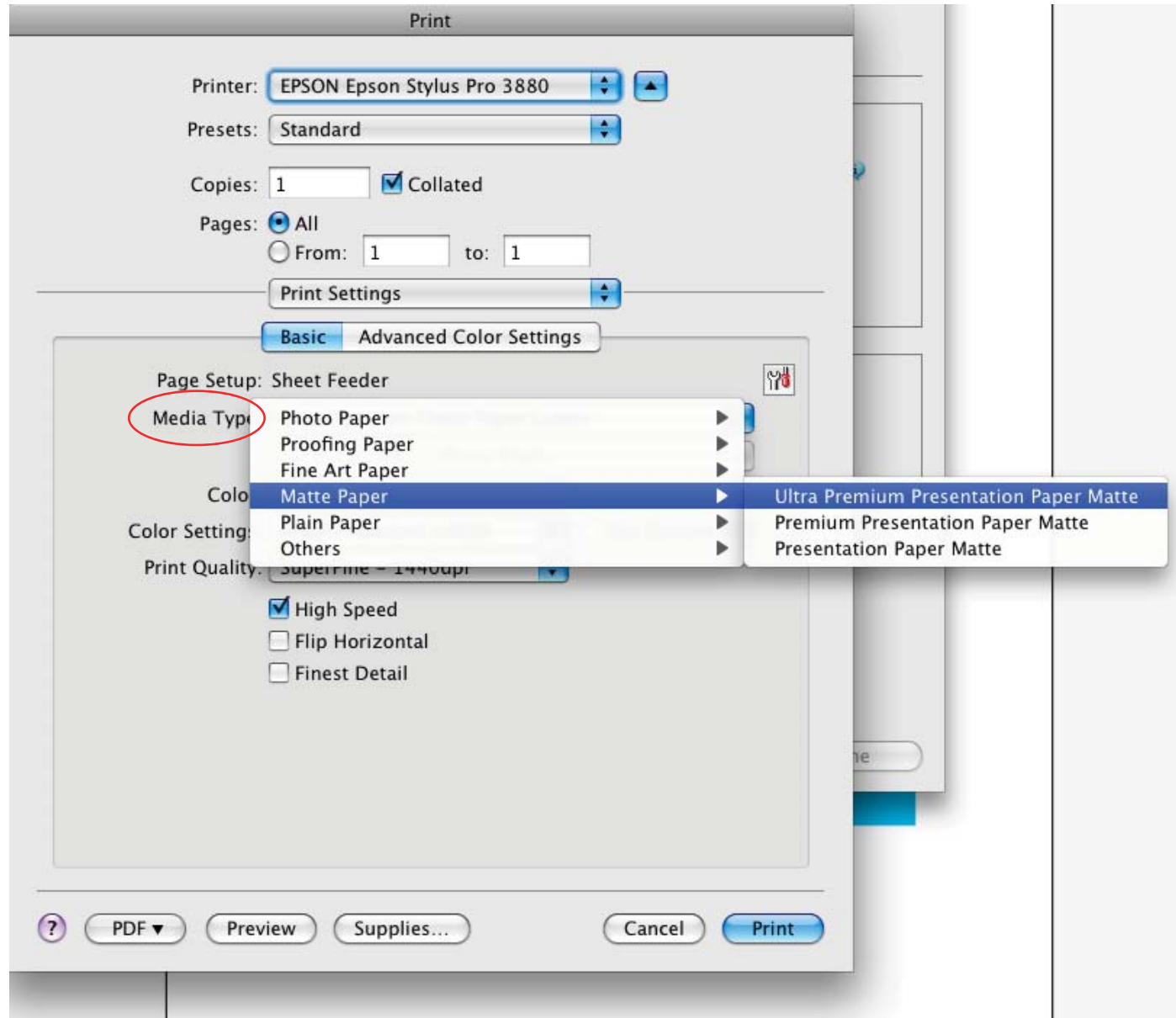


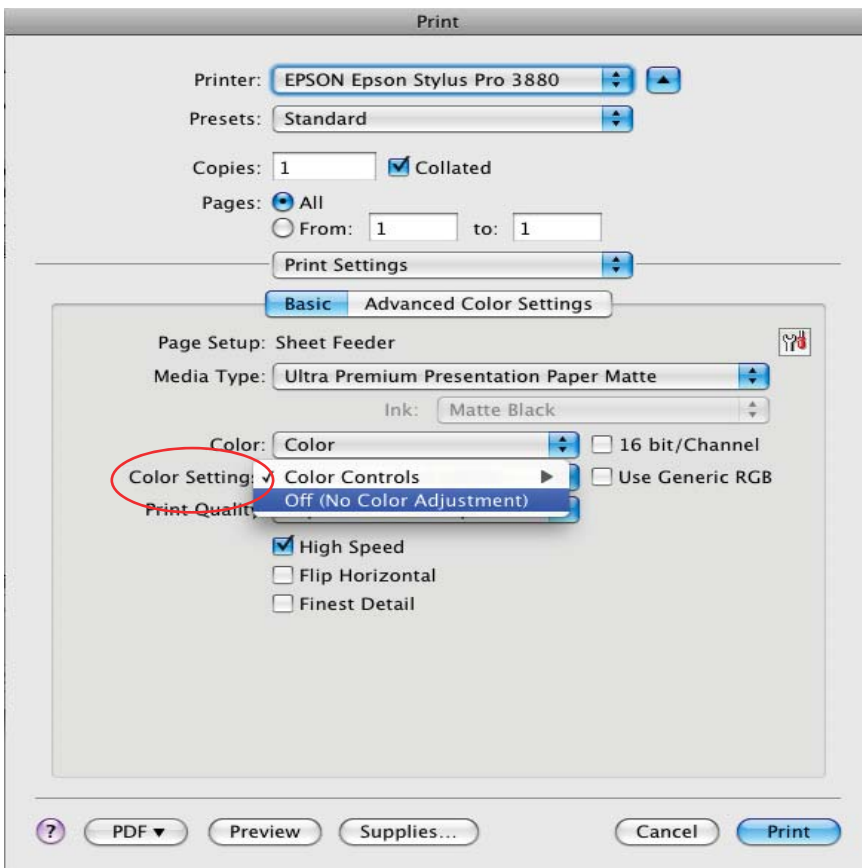
Select PRINTER.



Next to PRINTER, select EPSON Epson Stylus Pro 3880 printer. Use the inverted triangle to expand the dialog box.

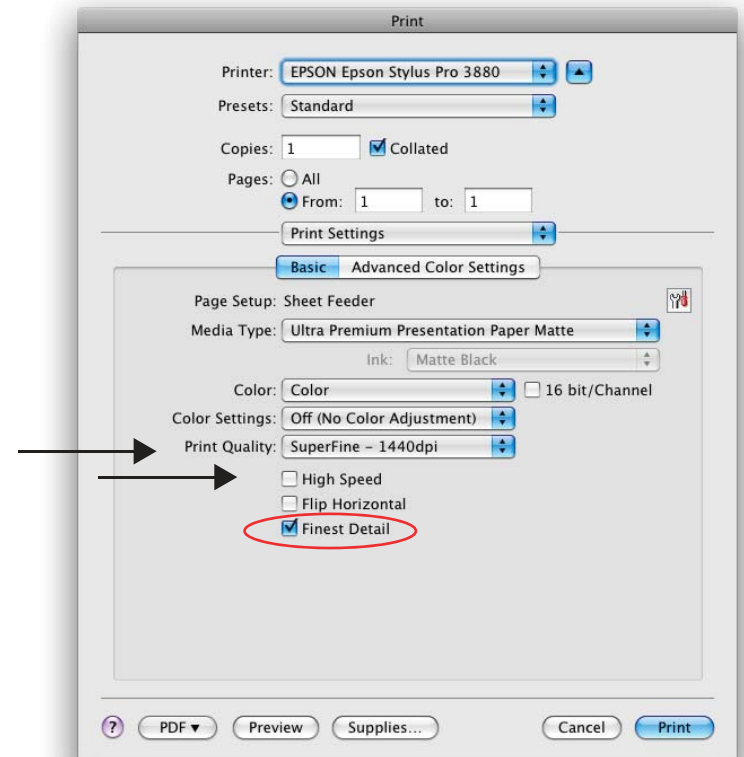
Next to MEDIA TYPE, select the type of paper suitable for your document. (For example: Enhanced Matte was previously selected. Therefore, under MATTE PAPER, select ULTRA PREMIUM PRESENTATION PAPER MATTE.)

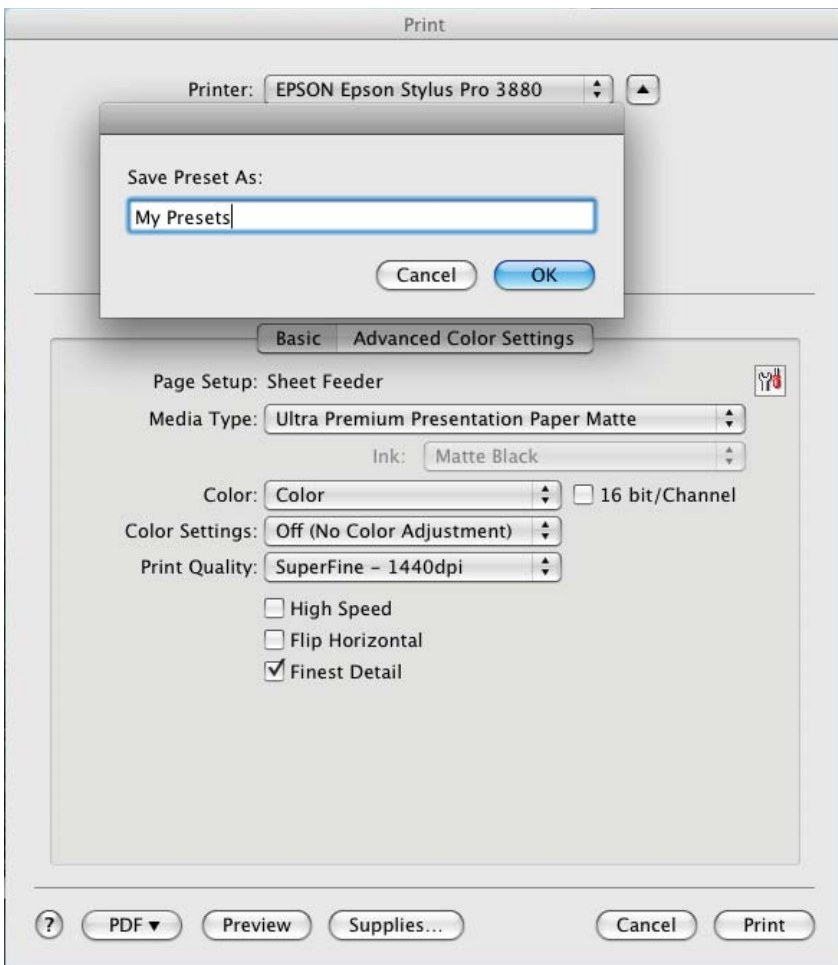




Next to COLOR SETTINGS ensure that OFF (NO COLOR ADJUSTMENT) is selected.

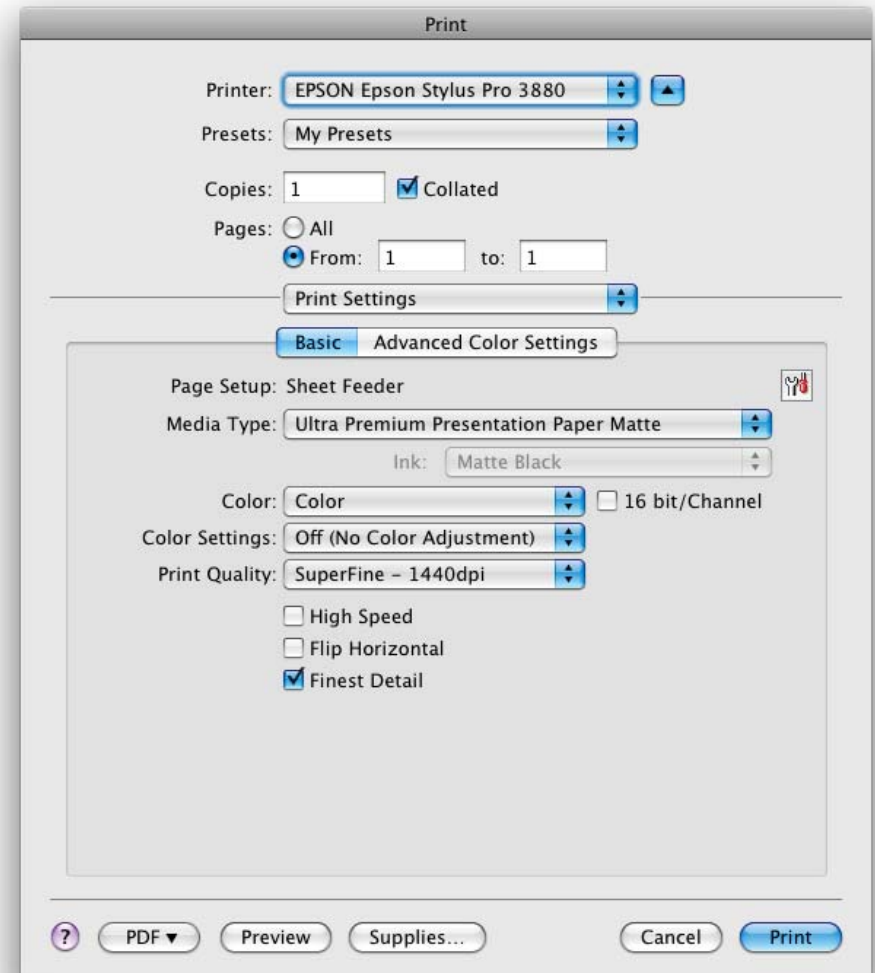
Next to PRINT QUALITY select SUPERFINE - 1440dpi.
Deselect HIGH SPEED.
Select FINEST DETAIL.



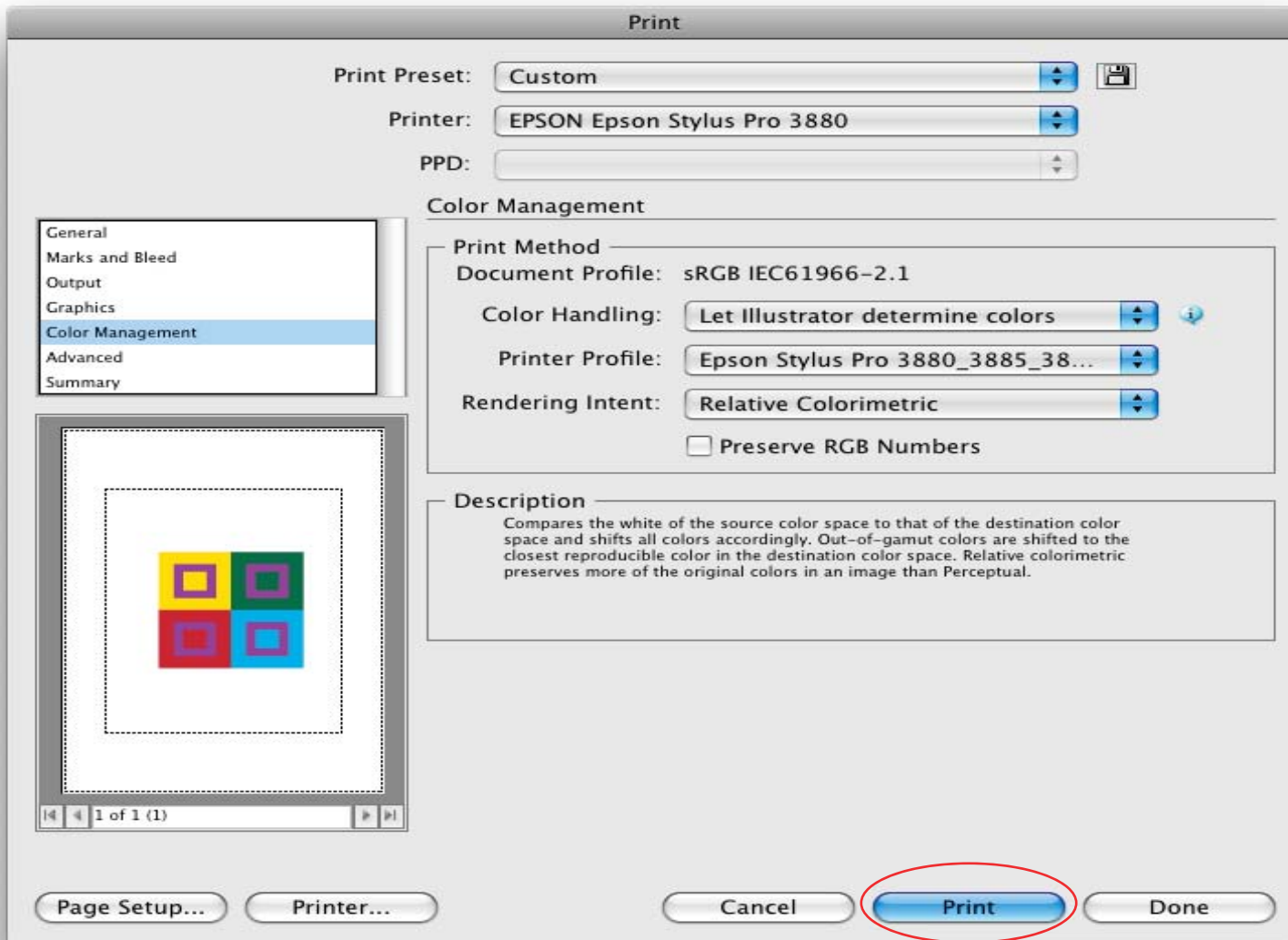


Next to PRESETS, select SAVE AS.
Enter a name for these settings.
Select OK.

Please note: This saves settings for this PRINT dialog only.
Check your settings before EACH print to ensure desired output.



Select PRINT.



Select PRINT.

A small PRINT dialog momentarily appears as the document's information is sent to the printer.

