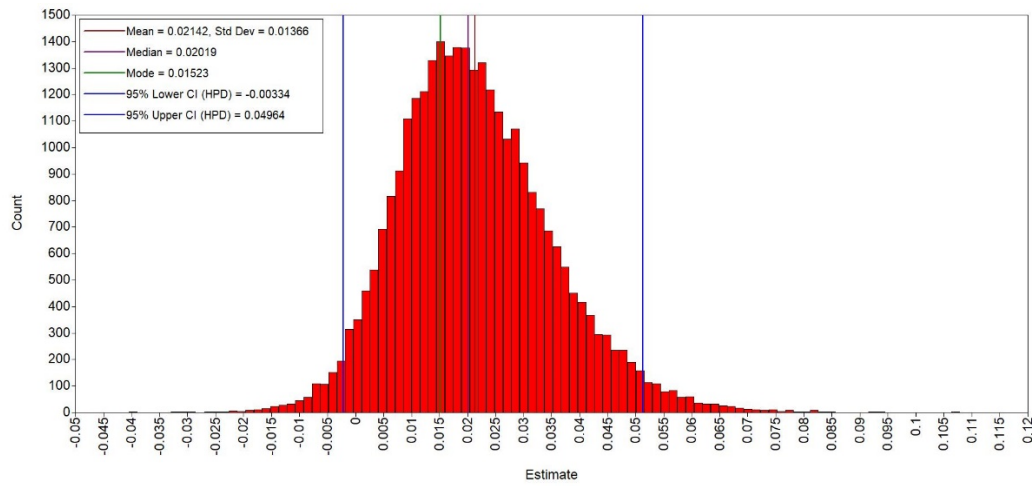
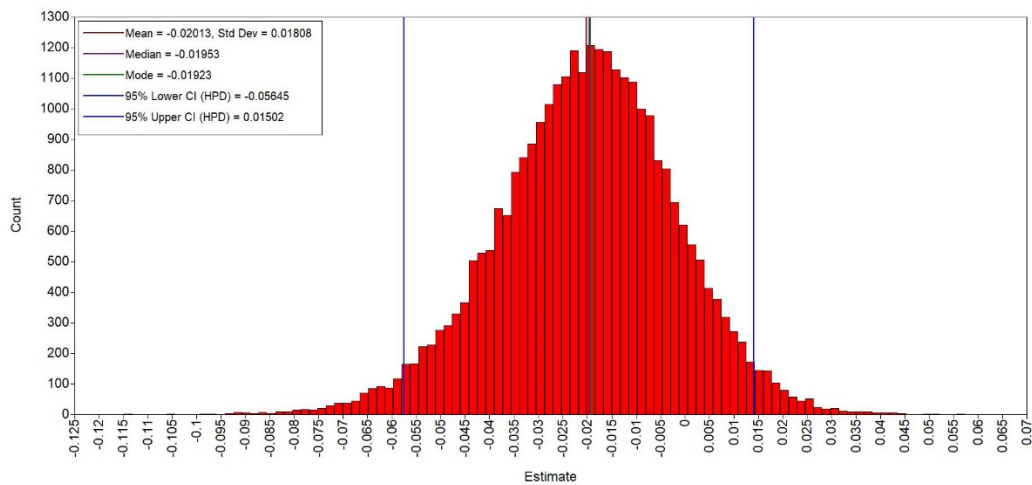


## Bayesian Posterior Distributions of the moME Effect Sizes

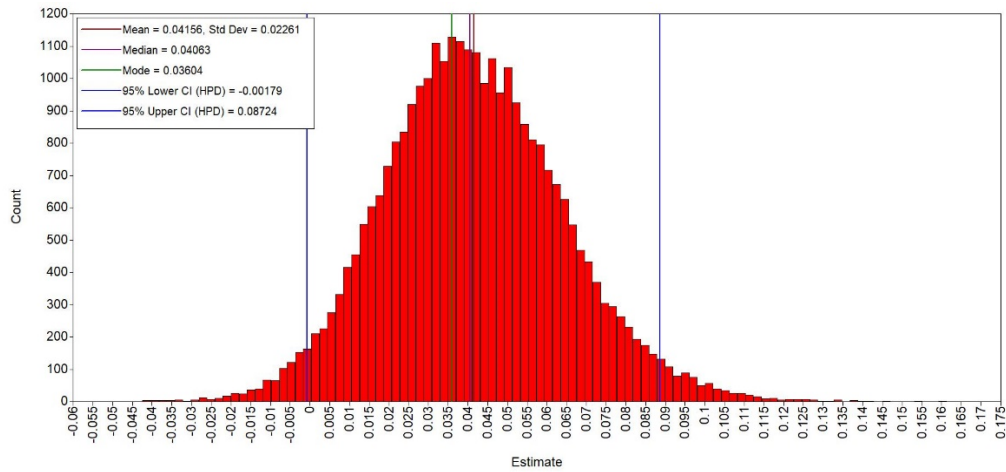
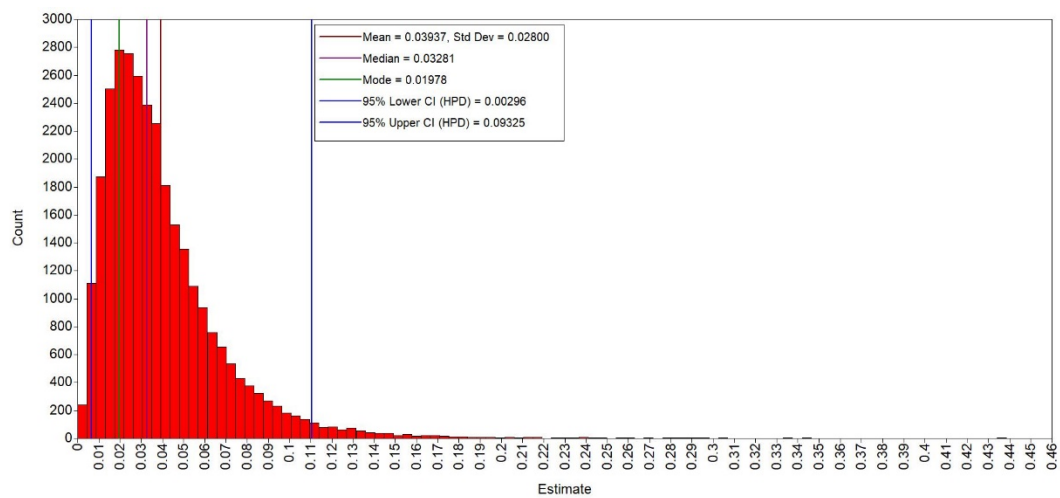
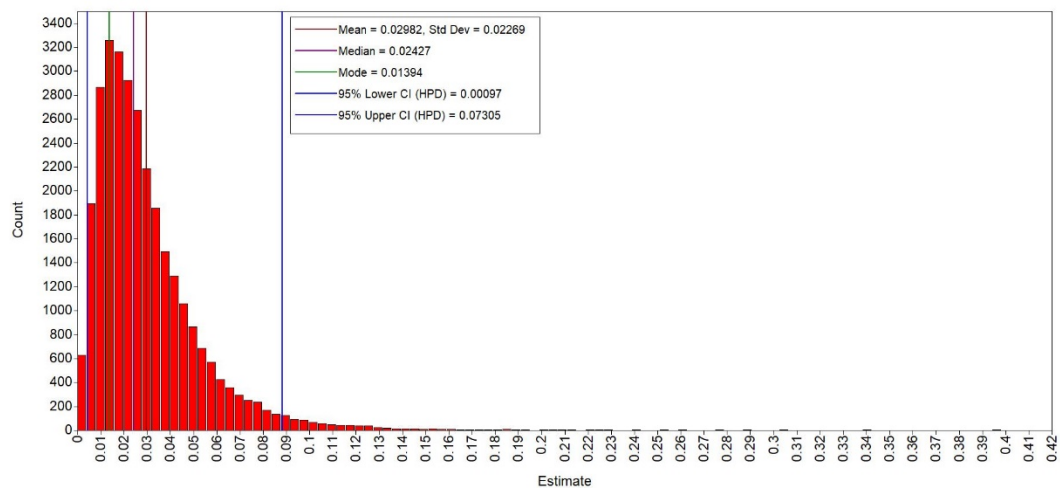
The ten figures in this file respectively describe the Bayesian posterior distributions of the conditional indirect effects moME<sub>1</sub> (at EMOSUP = mean+SD and TSREAD = mean-SD) and moME<sub>2</sub> (at EMOSUP = mean-SD and TSREAD = mean+SD), the difference between conditional indirect effects dif<sub>mo</sub> (dif<sub>mo</sub> = moME<sub>1</sub> - moME<sub>2</sub>), and the seven effect sizes,  $\hat{\phi}$ ,  $\hat{\phi}_1$ ,  $\hat{\phi}_2$ ,  $\hat{\phi}_{12}$ ,  $\phi_1^{(f)}$ ,  $\phi_2^{(f)}$ , and  $\phi_{12}^{(f)}$ , with the empirical example.

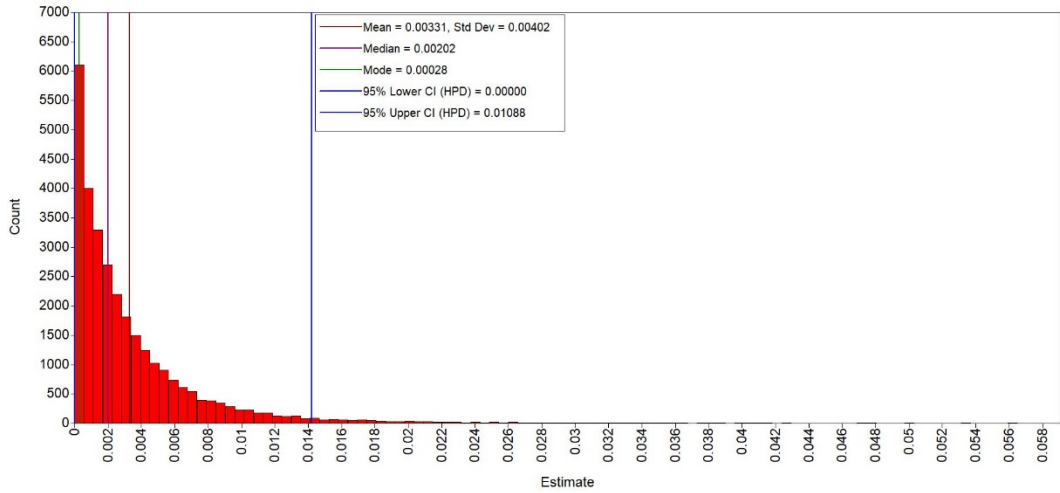
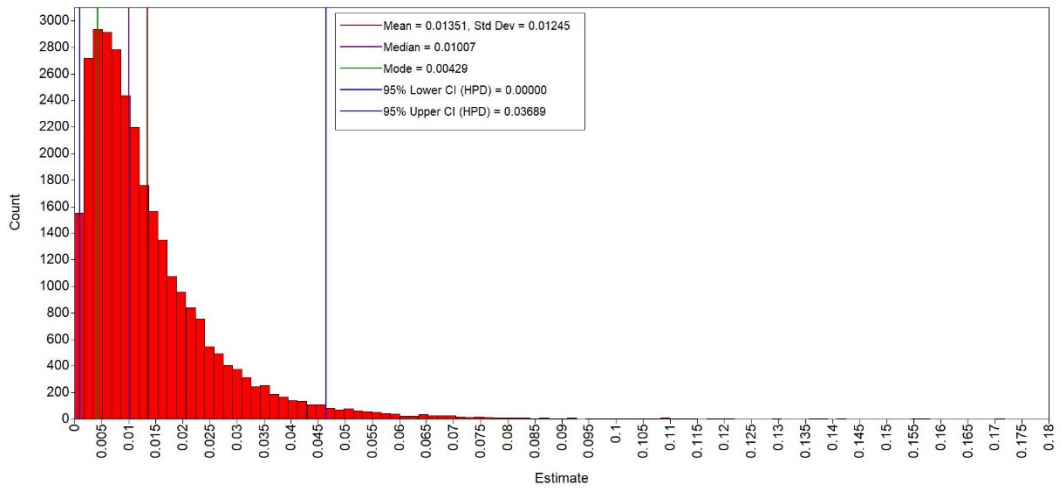
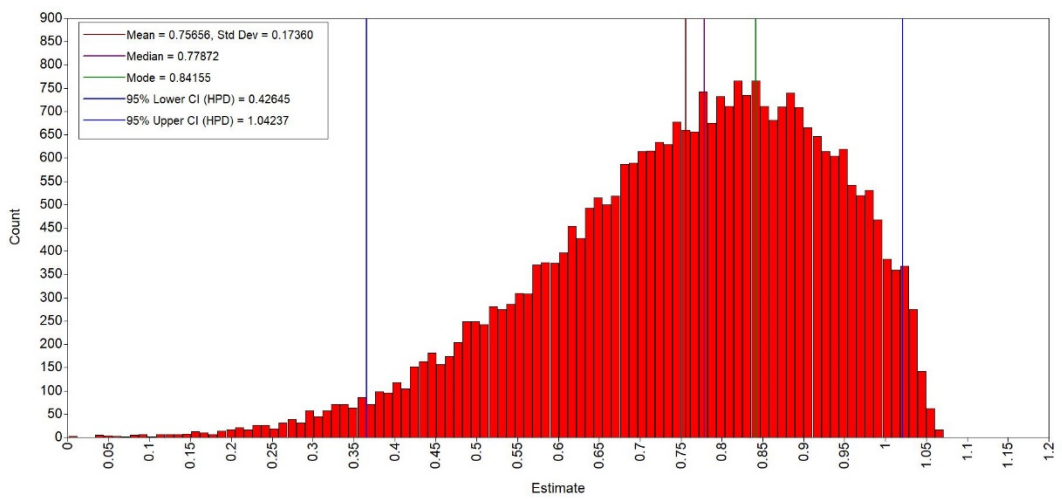


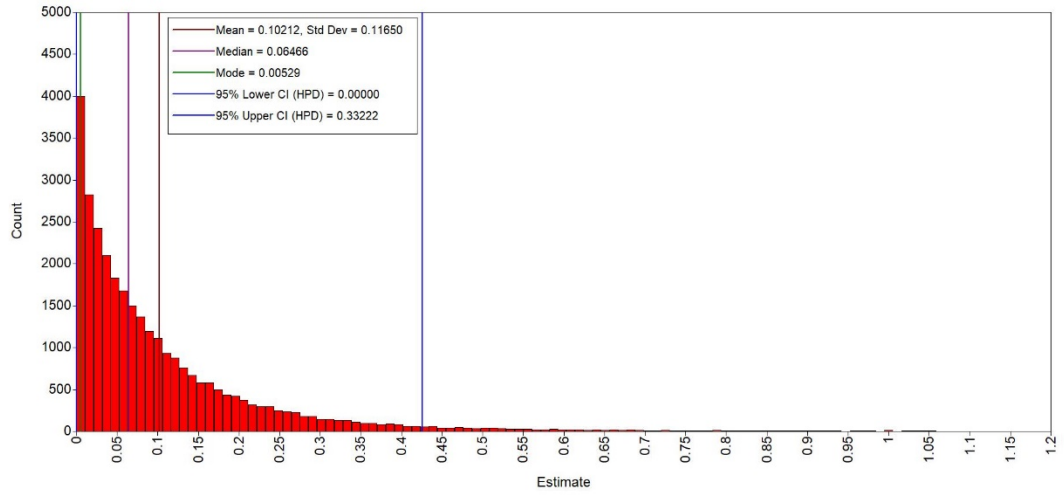
(1) Bayesian Posterior Distributions of moME1



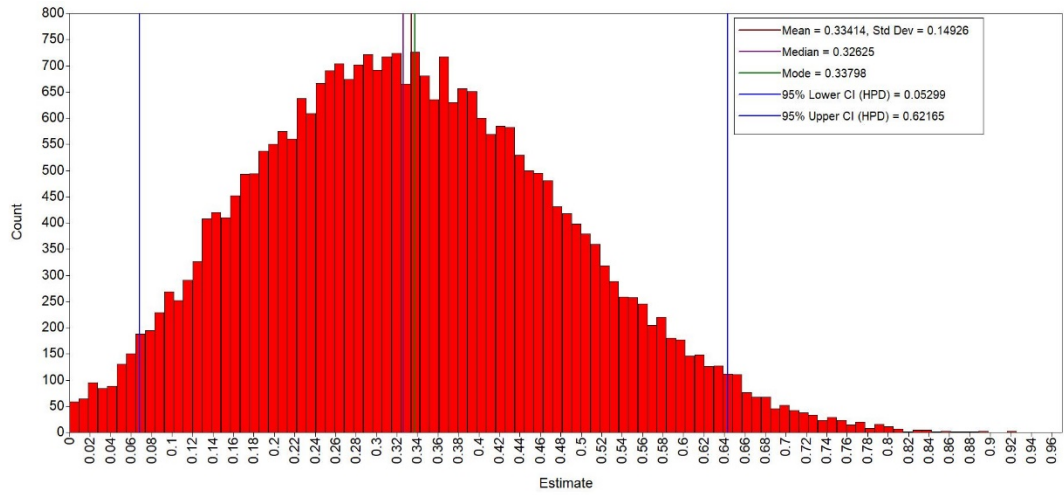
(2) Bayesian Posterior Distributions of moME2

(3) Bayesian Posterior Distributions of  $\text{dif}_{\text{mo}}$ (4) Bayesian Posterior Distributions of  $\varphi$ (5) Bayesian Posterior Distributions of  $\varphi_1$

(6) Bayesian Posterior Distributions of  $\varphi_2$ (7) Bayesian Posterior Distributions of  $\varphi_{12}$ (8) Bayesian Posterior Distributions of  $\varphi_1^{(f)}$



(9) Bayesian Posterior Distributions of  $\varphi_2^{(f)}$



(10) Bayesian Posterior Distributions of  $\varphi_{12}^{(f)}$