



Welcome Home!



The Notre Dame Chorale is back and ready for the 2016-2017 school year, and we're looking forward to a great season. The Chorale welcomed 17 new singers this year, for a total of 50 members for the Fall Concert at 8:00 pm. The group will expand to over 60 singers for Messiah in December. Our ensemble includes international students, graduate students, faculty, and, of course, Notre Dame undergraduate students. We are very excited to learn music, travel and perform, and spend time together. We're looking forward to seeing alumni, friends, and fans at our concerts and are, as always, deeply grateful for your support!



Lux Aeterna

The Chorale's first concert, titled "Lux Aeterna," will be at 8:00 pm on Friday, November 4, 2016 in Leighton Concert Hall of the DeBartolo Performing Arts Center. The group has been working hard to prepare a varied and challenging repertoire, including pieces in German and Latin, a few very dissonant and difficult compositions, and some fun traditional Irish ballads. Many an after-rehearsal dinner at South Dining Hall has been blessed (or cursed, some might argue) with Mozart or Wagner-related puns. The highlight of the program will be the world premiere of Stefan Girardet's 12-voice *a cappella* motet "Lux Aeterna," preceded by settings of the same words by Renaissance composer Jean Richafort and the English turn-of-the-century composer Sir Edward Elgar. Stefan Girardet will be present at the performance to hear his work live for the first time. Many of the songs are *a cappella*, but we will be also accompanied by the talented Päivi Ekroth. The Chorale is looking forward to making its season debut! Tickets can be reserved at performingarts.ne.edu.

Messiah

The Chorale will once again be presenting Handel's Messiah on December 2nd and 3rd to kick off the holiday season, and for the second year the performances will feature the Notre Dame Festival Baroque Orchestra. We hope to see many alumni and friends in the audience!



News



Concession Stand

We had huge success with our first fundraiser of the year at the Michigan State-Notre Dame football game on September 19th. Michelle Williams, our VP, ran a tight ship at the concessions stands, and despite some initial difficulty adjusting the grill to avoid burning the brats and burgers to a crisp, we managed to sell out of our barbecue and had a great time serenading passers-by with loud and enthusiastic renditions of several school songs. The stand brought in a net total of \$2,366, which will go a long way towards funding Winter Tour.



Winter Tour

Speaking of Winter Tour, Chorale is looking forward to our week-long performance tour at the beginning of 2017. The students will take the last week of winter break to travel down south, leaving the snow and Midwest permacloud behind for sunny Florida! Tour cities are still being arranged. Any alums in Florida who would like to help with arrangements are encouraged to write to our tour commissioner, Patrick Tingleff at patrick.tingleff.1@nd.edu. We look forward to sightseeing, exploring, and singing our special Winter Tour program in a warm climate in January. We will send out another notice once all the tour stops are finalized. We hope to see some of you in the audience!



Eight members of the Chorale provided music at the funeral Mass for Margaret Gillespie, a sophomore member of the original Chorale of 1974, in the Cedar Grove Cemetery Chapel on Friday, September 23. The octet sang the "Lux Aeterna" arrangement of Elgar's Nimrod movement of the *Enigma Variations* and Alexander Blachly's *Benediction*, which he wrote for the Chorale in 2009 and we sing at the end of every rehearsal. It was a wonderful opportunity to pay tribute to one of the original members of the Chorale and to share our music with a small gathering of her husband and family in the tiny chapel.



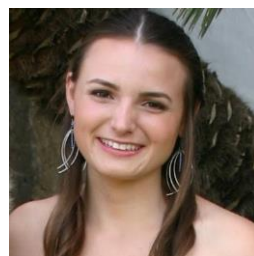
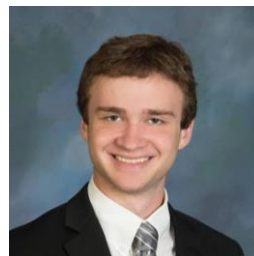
Two of our members also perform with the Notre Dame Marching Band, which makes football weekends even more exciting!



Meet Our Fearless Leaders



Alex Blachly has directed the Notre Dame chorale for nearly a quarter of a century, and under his expert instruction the group has enjoyed amazing growth. He received a masters and doctoral degree from Columbia University, and is, in addition to teaching undergraduate and graduate courses in Music History and Renaissance Polyphony, currently writing a book on hidden Pythagorean numbers embedded in medieval and Renaissance music. Not one to do anything by halves when it comes to Chorale, Alex has arranged over thirty solo songs by Beethoven, Schubert, Schumann, Brahms, Debussy, etc., for four-voice chorus and piano, and he is an enthusiastic participant in Chorale activities, such as winter tour. In addition to his Chorale duties, he directs Pomerium, an *a cappella* group based in New York (we consider ourselves very lucky that he's willing to fly back and forth to grace us with his presence) and he has worked with many other groups at various universities, including Rutgers and Penn. Alex has two children (age 40 and 36). His wife, Mary Anne Ballard, also a musician, is devoted to the Chorale and often accompanies the group on its tours.



Christian Hokaj is the secretary of Chorale this year and sings tenor in the Chorale. He is a junior honors mathematics major interested in becoming a professor of mathematics, and he loves participating in the group in his spare time. His favorite part of Chorale is the Messiah concert in December, and he is looking forward to many great performances with the Notre Dame Chorale this year and next.

Erin Graney is a sophomore from Albany, NY. She is a Biological Sciences, pre-med student at ND. Erin joined Chorale her freshman year and is having an amazing time bringing together the wonderful members of Chorale this year. Erin lives in Ryan Hall on campus and is a part of the Service commission in Ryan.

Julia Oksasoglu is a senior from Tucson, Arizona, majoring in Applied and Computational Mathematics and Statistics with a minor in Poverty Studies. Julia has been a member of Chorale since her freshmen year, and she credits the group with being her home at Notre Dame. Her favorite aspect of Chorale is the community atmosphere and close friendships that are cultivated in the choir. Julia is incredibly humbled and proud to represent the Chorale as its President this year.

Michelle Williams is a senior from Galesburg, Illinois, living in Pasquerilla West Hall at Notre Dame. She is majoring in Neuroscience and Behavior and is planning on starting medical school next year. Michelle joined Chorale the spring semester of her freshman year. She served as the Secretary this past academic year and is excited to be this year's Vice President. Michelle is thrilled to be able to represent the group who made Notre Dame home for her.

Brooke McGill is a sophomore Neuroscience and Behavior major from Santa Barbara, California. She has been a member of Chorale since her freshman year and enjoys the singing as much as she enjoys the community of Chorale. Brooke is very excited to serve as this year's Chorale Treasurer and she is looking forward to a tremendous year of kinship and song.

Check us out on YouTube at
<https://www.youtube.com/channel/UCfPbTWHokskNJSKRqQ40maA>

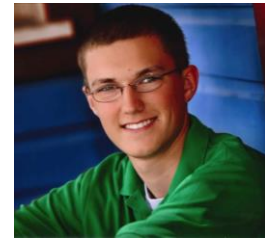
Anna Kalkman is a sophomore Mechanical Engineering major from Eagan, Minnesota. Her “home under the Dome” is McGlenn Hall. This is her second year in Chorale. While Anna is involved in other aspects of dorm and campus life—as McGlenn’s Gender Relations Commissioner and member of Swing Club and various engineering societies—Chorale holds a very special place in her heart. It has been a joy and a privilege, as social commissioner, to develop the community within the Chorale that makes it so special.



Trey Murphy is a sophomore Sociology and Spanish major living in Morrissey Manor, originally from Indianapolis, Indiana. He absolutely loves the amazing friendly people of Chorale, and is thrilled to be back with the group as the public relations representative this year. He is also a member of the Notre Dame Health and Fitness club and Transpose, a dance company on campus.



Patrick Tingleff is a junior Applied and Computational Mathematics and Statistics major with an Actuarial Science minor. He is originally from Des Moines, Iowa, but currently lives on campus in Alumni Hall. He has been involved in Chorale since his first year at Notre Dame. He is currently serving as the Tour Commissioner for the Chorale and has previously served as the Treasurer. When he is not singing in the Chorale, he is involved in the Student Union Board and the Junior Class Council. He is also active in his dorm serving as a Merchandise Commissioner and a Special Events Commissioner.



Merchandise

Chorale CDs make fantastic gifts for the music lover in your life. It’s never too early to start shopping for Christmas, so visit <http://www3.nd.edu/~chorale/pages/cdss.html> to order!

Thank You!

The Chorale enjoys so many unique and amazing opportunities thanks to the generous support of our alumni, family, and friends. Our travel, concerts, and activities would not be possible without your assistance, so thank you, from the bottom of our hearts. Please visit <http://www3.nd.edu/~chorale/pages/support.html> to continue to support our program and enable us to share our music

