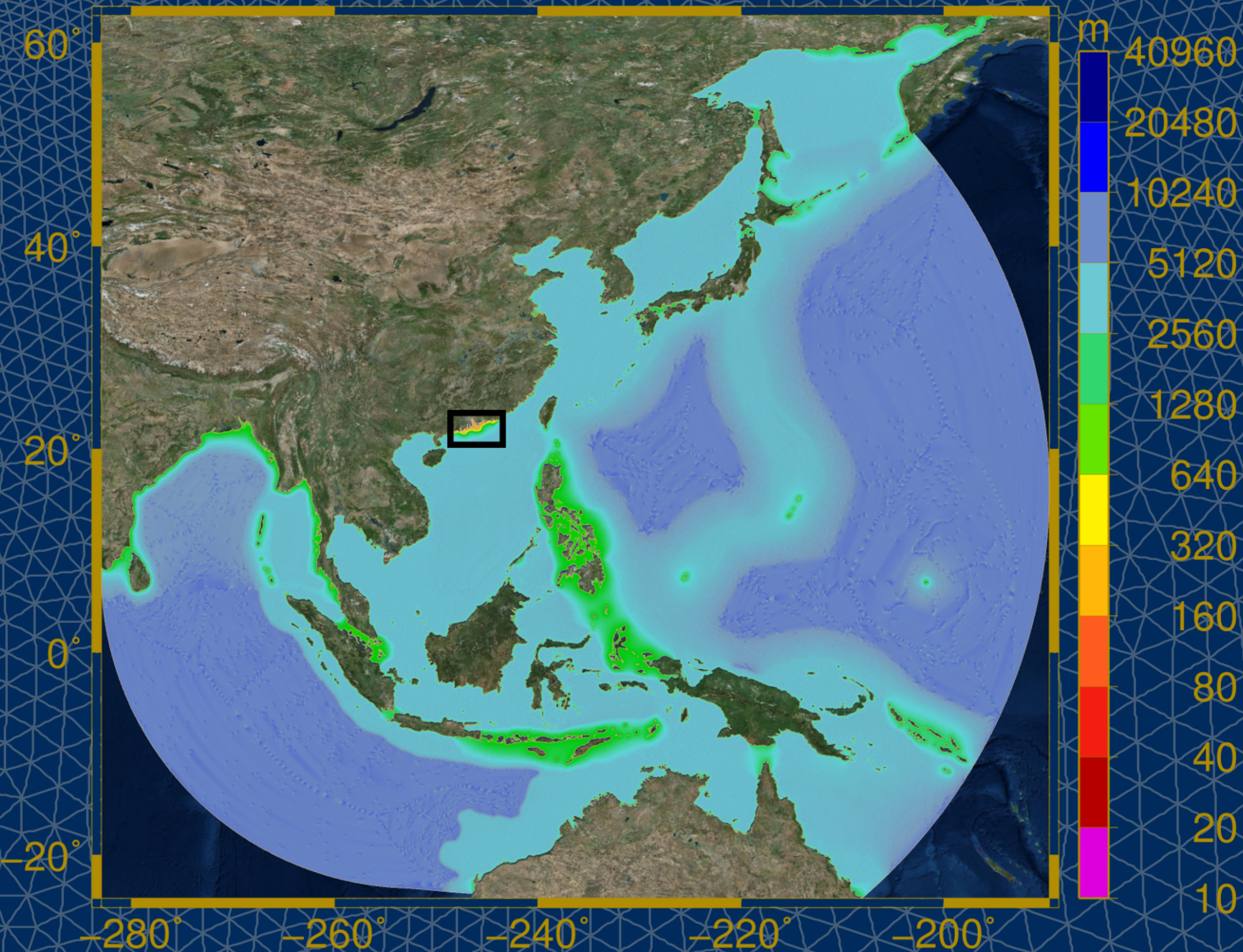
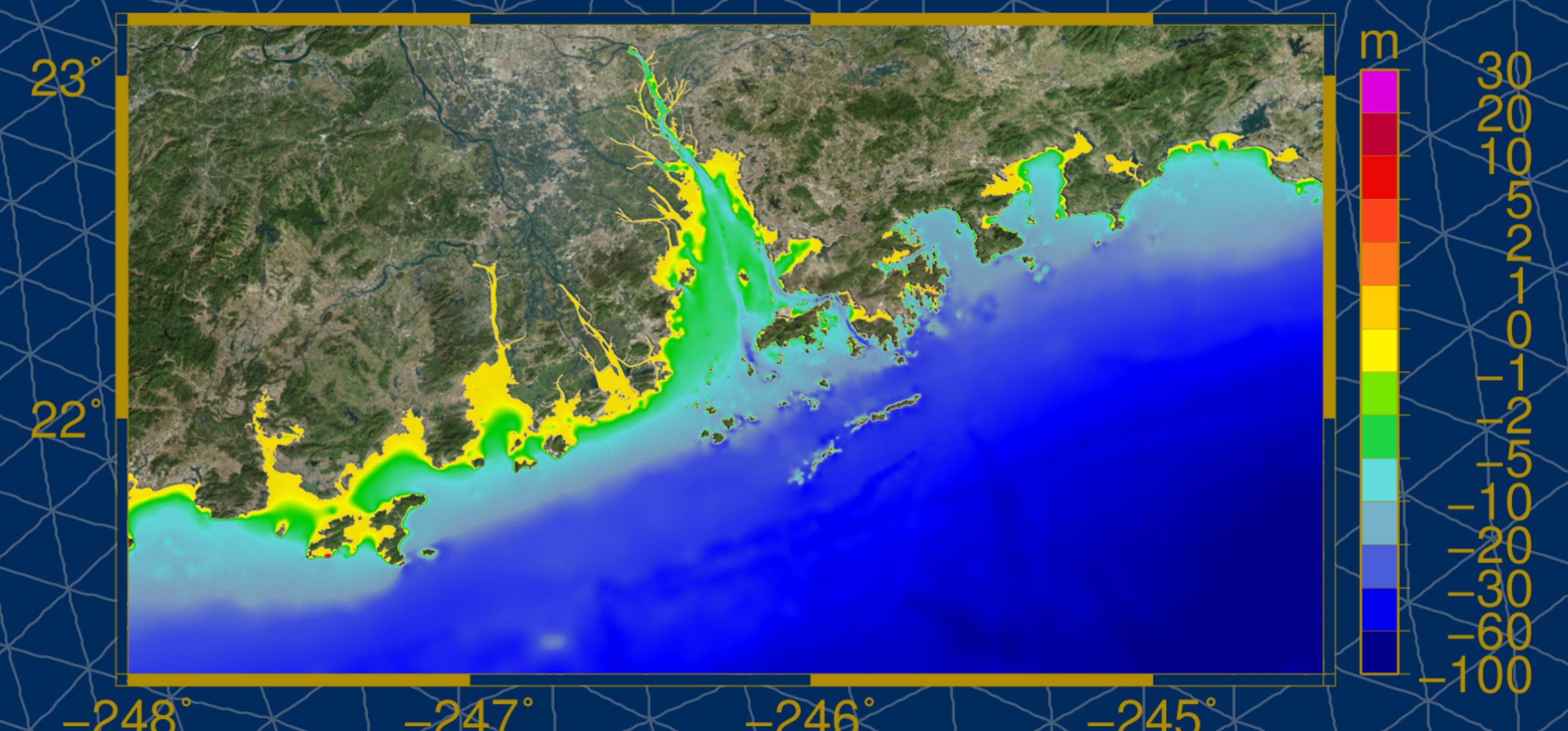
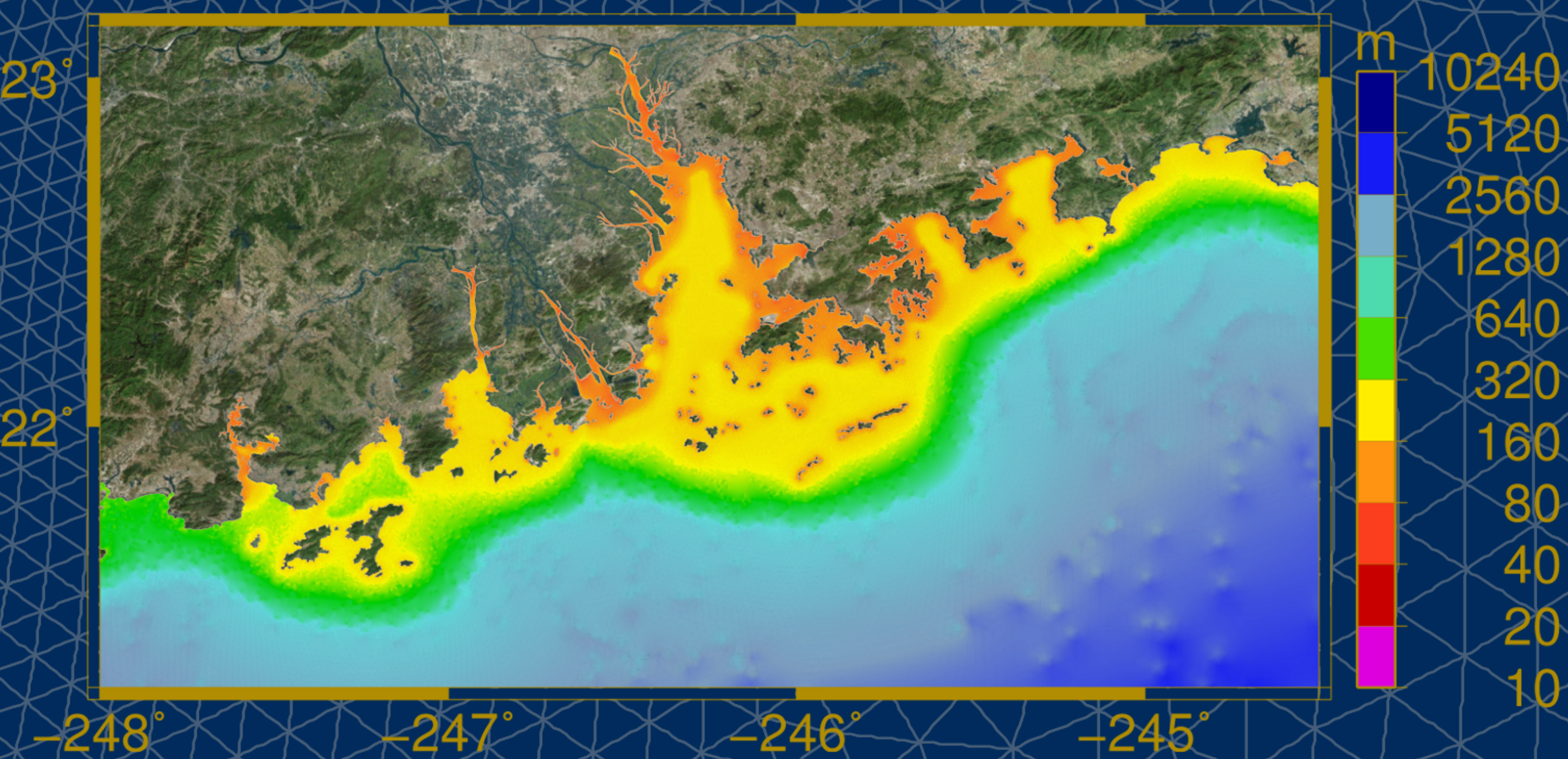
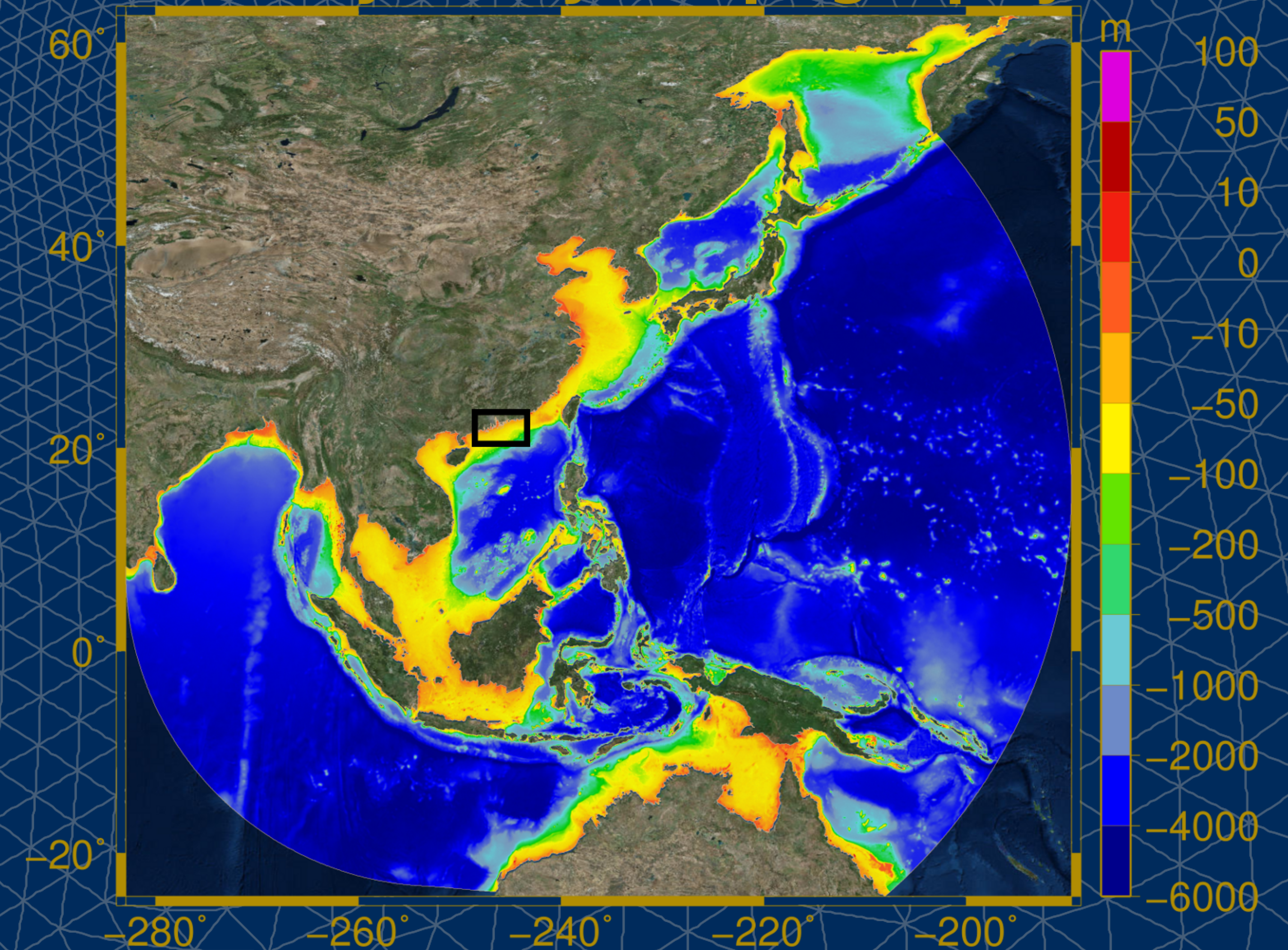


SCS

Grid Size



Bathymetry / Topography



Number of Elements: 6,520,612
Number of Nodes: 3,336,869
Minimum Resolution: 22.1 m
Maximum Resolution: 14 km
Created: 2014

Grid of the Western Pacific Ocean, the South China Sea, and the Eastern Indian Ocean for computing tides, riverine flows and typhoons driven storm surge coupled to wind waves through the integrated SWAN+ADCIRC model.