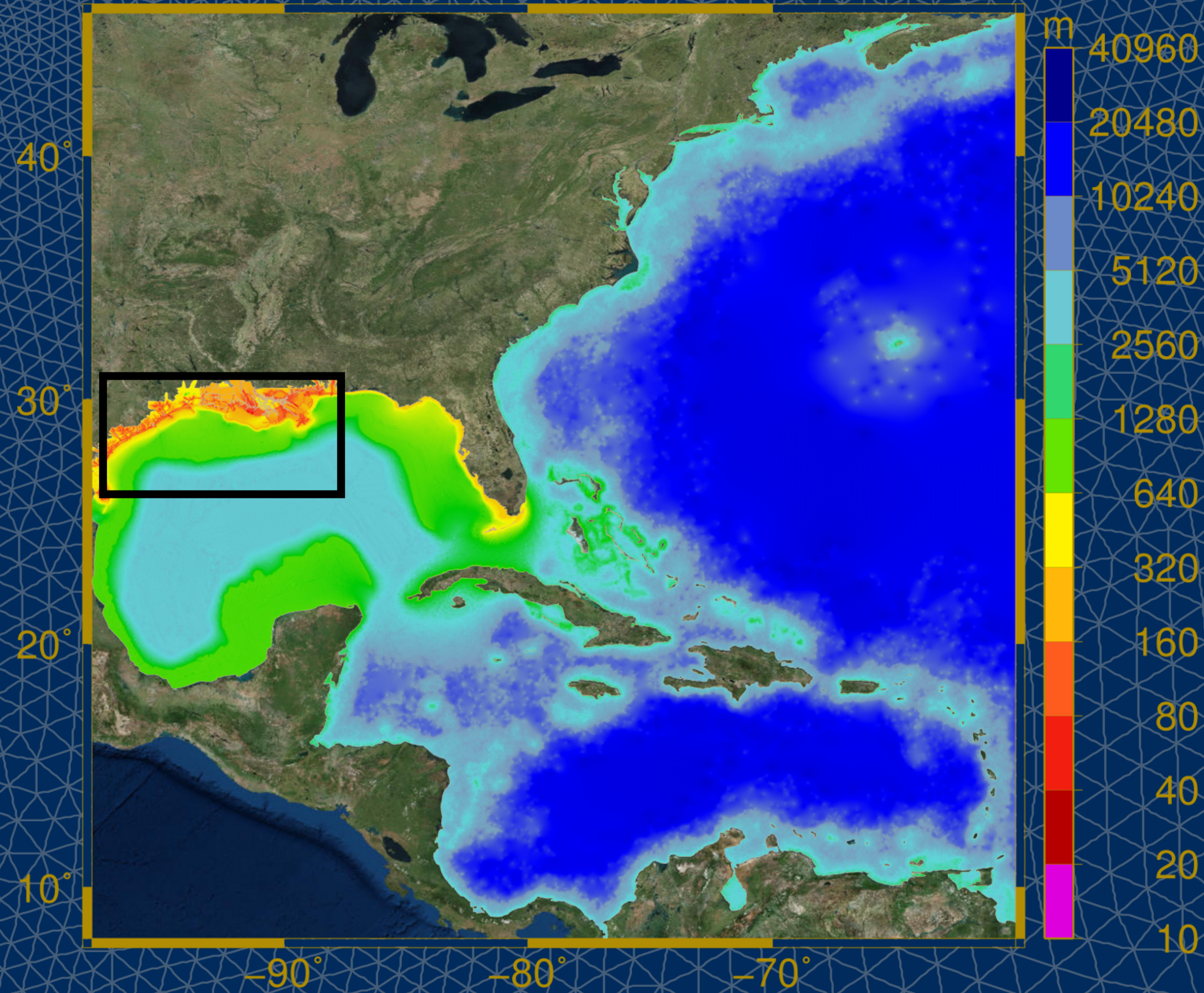
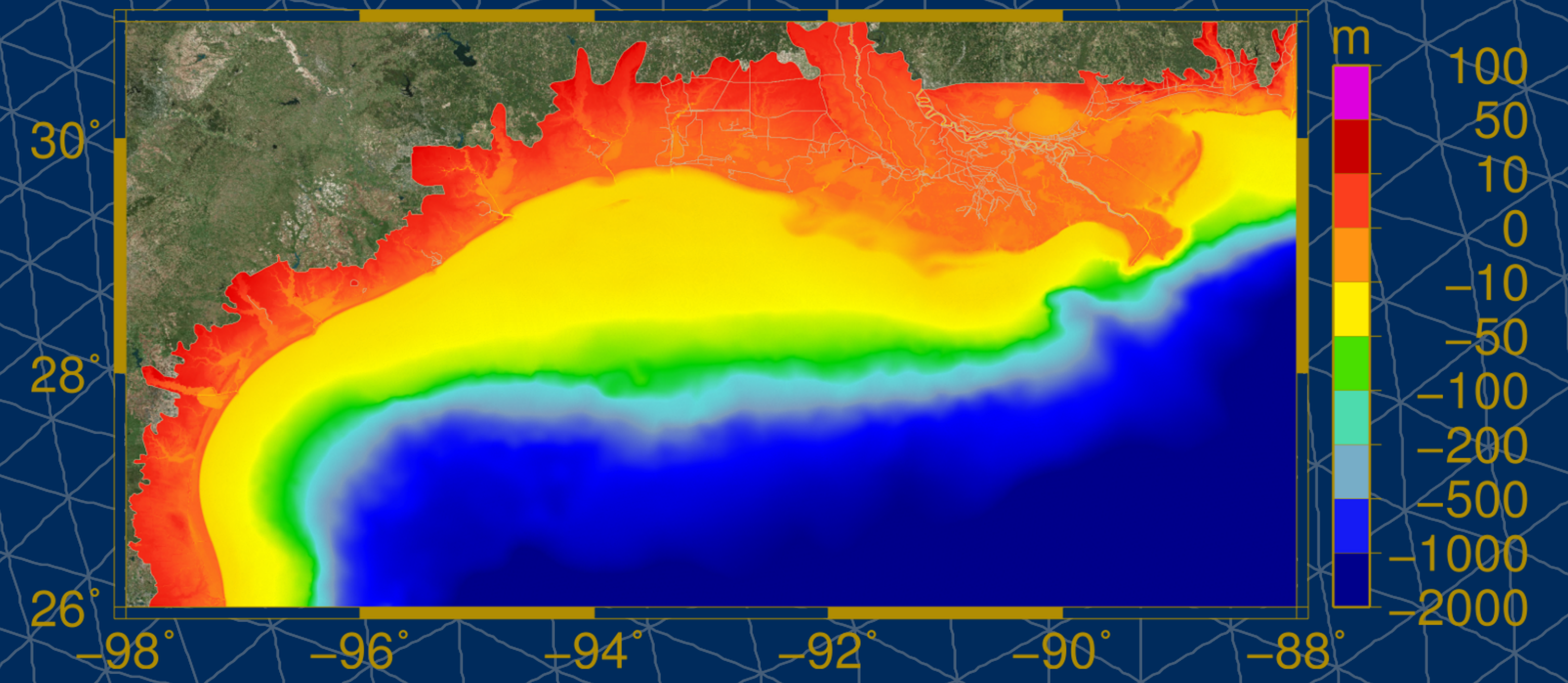
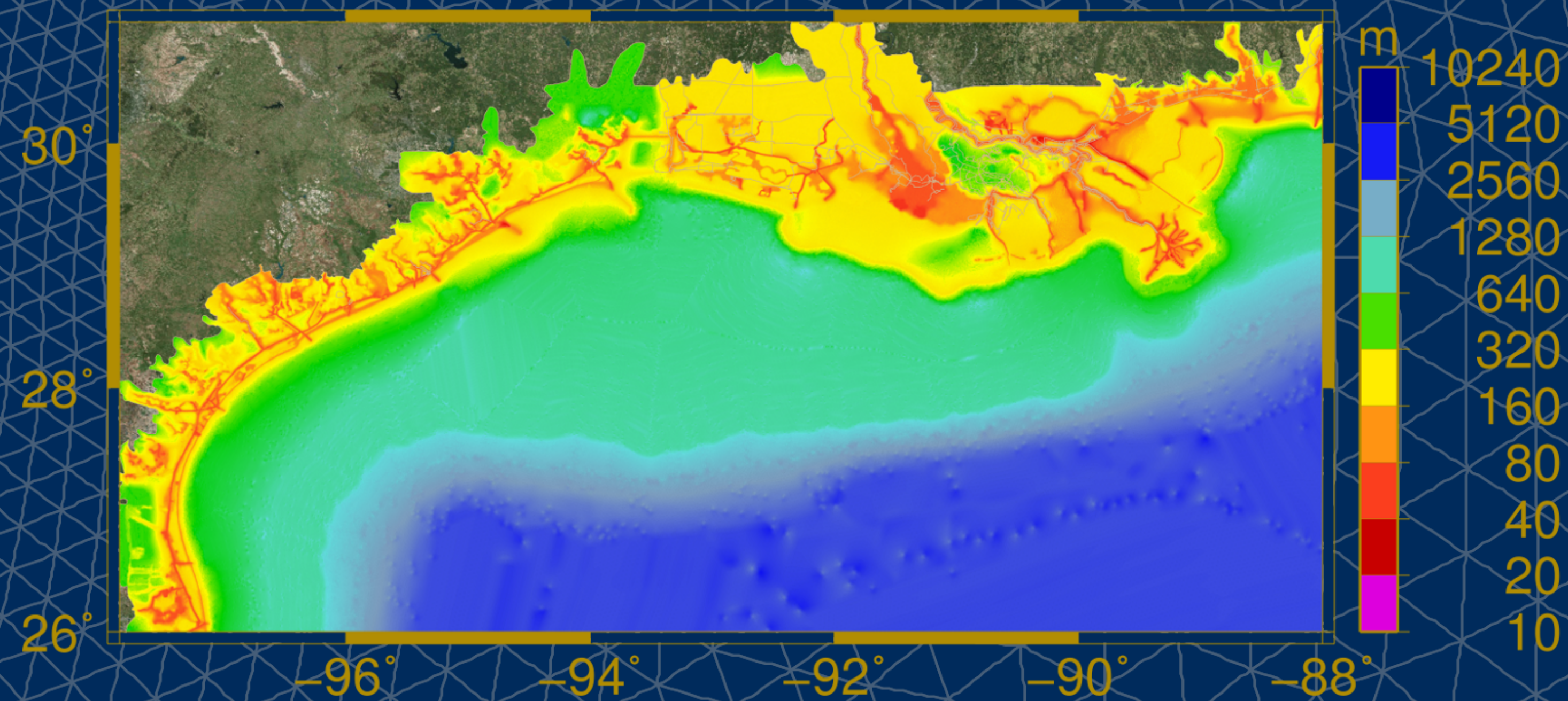
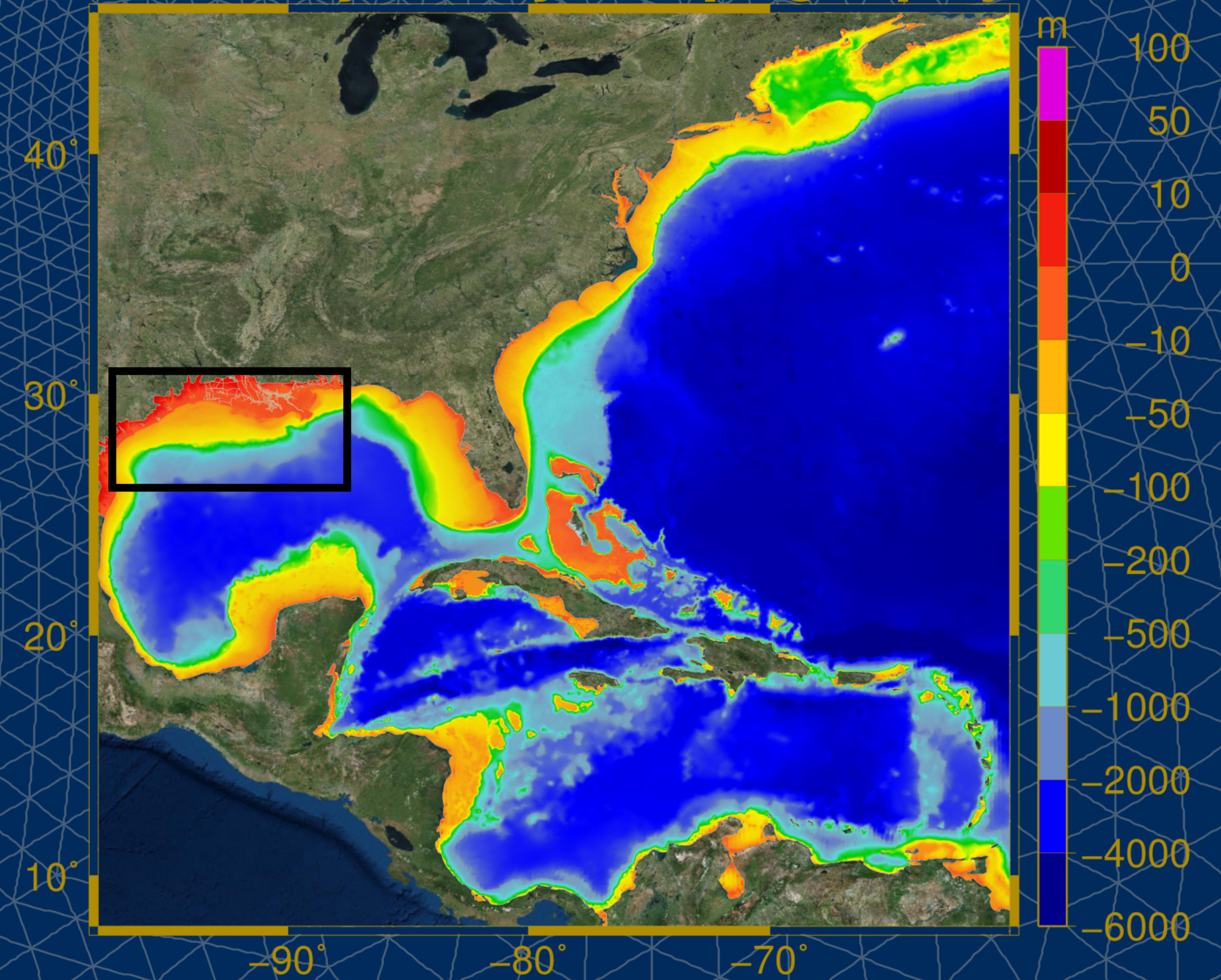


SL18+TX33

Grid Size



Bathymetry / Topography



Number of Elements: 18,300,169
Number of Nodes: 9,228,245
Minimum Resolution: 9.8 m
Maximum Resolution: 31.3 km
Created: 2011

Combined model of coastal Louisiana and Texas for computing tides, riverine flows and hurricane storm surge coupled to wind waves through the integrated SWAN+ADCIRC model. Used in hindcasting Hurricane Ike.

Hope et al., 2013.