



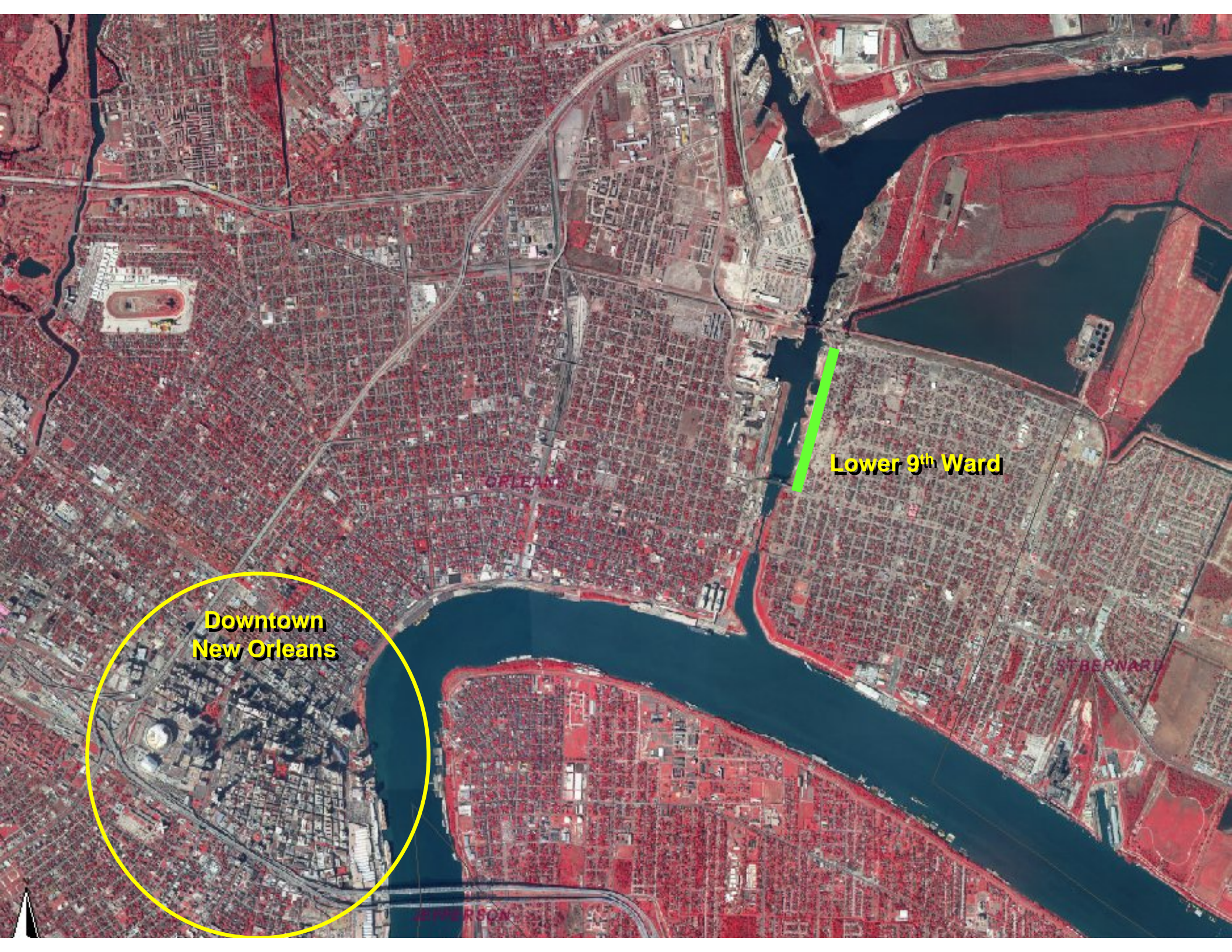
US Army Corps
of Engineers

Overview Briefing
Lower 9th Ward
and
Inner Harbor Navigation
Canal (IHNC)

University of Notre Dame

November 6, 2006

One Team: Relevant, Ready, Responsive and Reliable



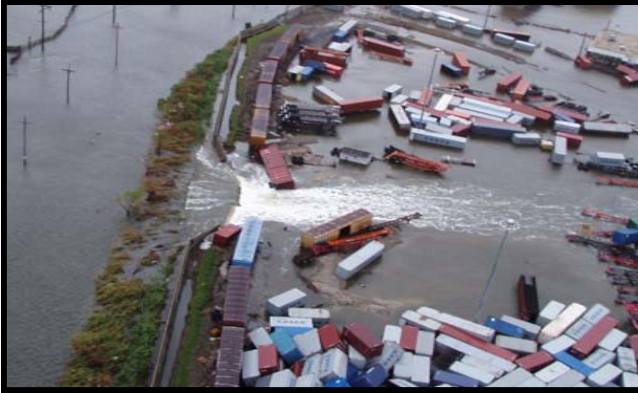
**Downtown
New Orleans**

Lower 9th Ward

ORLEANS

ST BERNARD

JEFFERSON



Flooding of Container Storage Yard



Northern 9th Ward Breach



Sheetpile Floodwall Collapse

Inner Harbor Navigation Canal Reconstruction Area



Local Authorities

- Orleans Levee District
- Port of New Orleans
- Louisiana DOTD

Hurricane Protection System

- 10 miles of floodwall and levee

Damage

- 1.2 miles of floodwall and levee



**US Army Corps
Of Engineers®**



MRGO / GIWW



IHNC Breach - Water flowing out of the lower 9th ward right after Katrina.



IHNC Breach



IHNC Breach



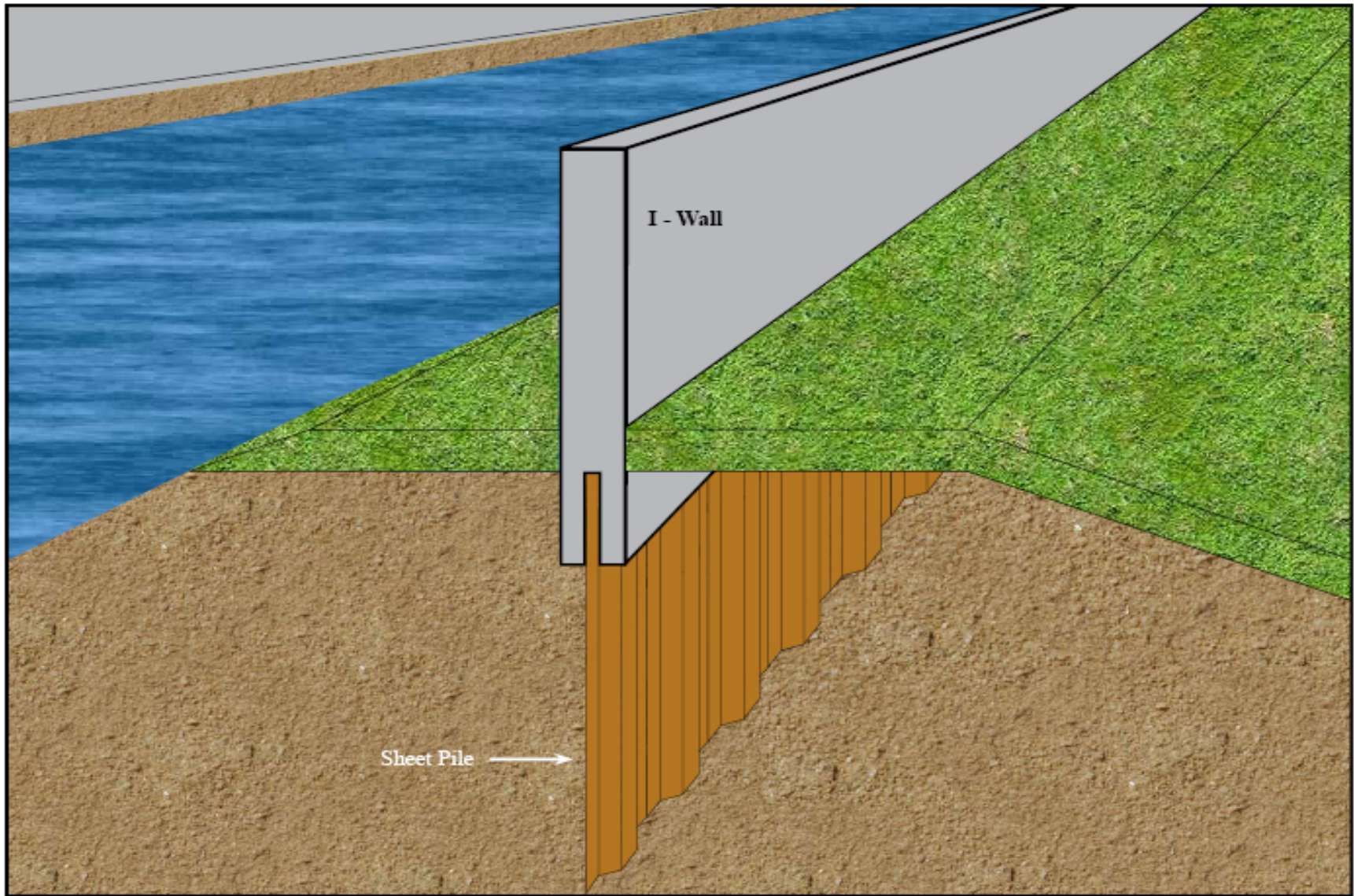
Building of closure at Large breach lower 9th ward



SCOUR on Protected Side Lower 9th ward adjacent to the large breach, note soil line on wall



Old wall configuration



Building of closure at Large breach lower 9th ward













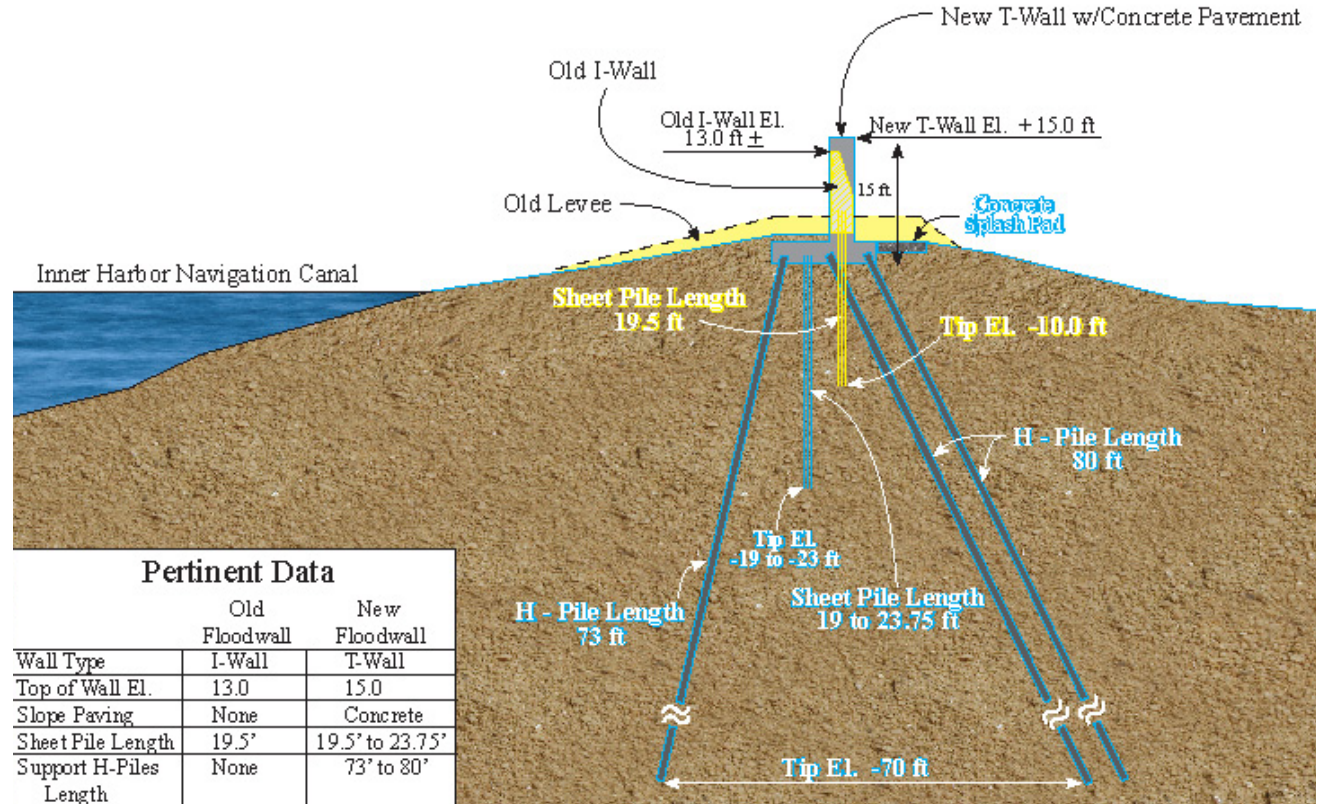




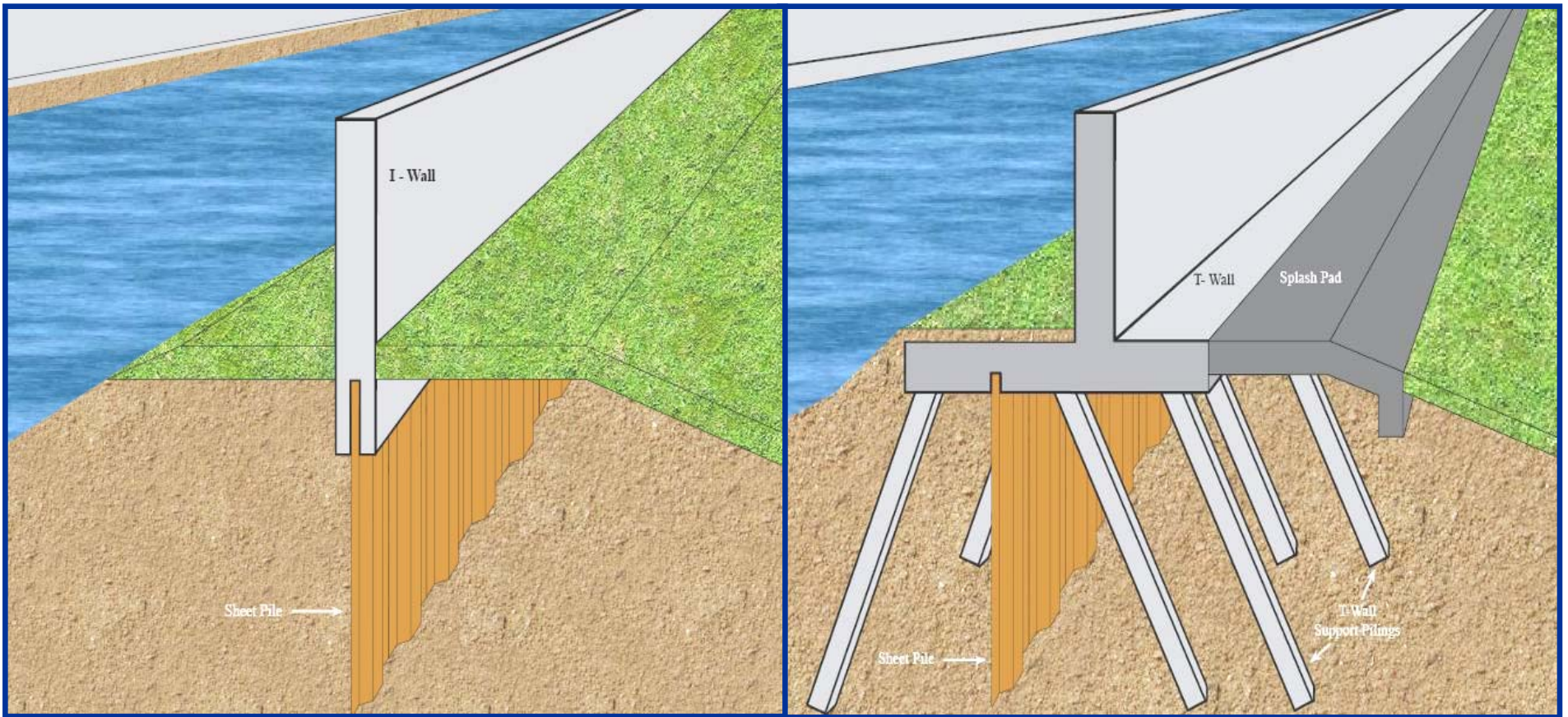
Inner Harbor Navigation Canal

East Side, Claiborne to Florida – IHNC01

- 4,000-foot reach of I-Wall (with 2 breaches) replaced with T-Wall
- Cost \$33.9 million
- Completed in June 2006



Improvements - *T/L wall design*



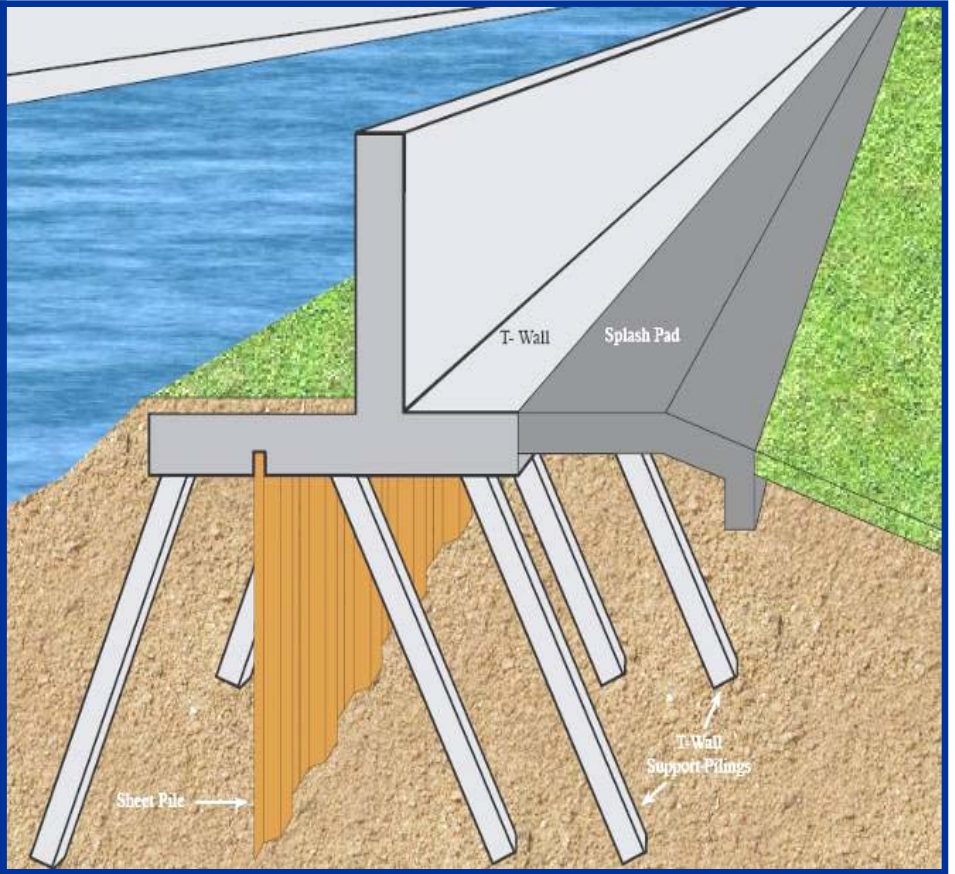
Before

After

Improvements *T/L wall design*



Before



After