



ND Works

Vol. 11, No. 7 ■ January 9, 2014

News for Notre Dame faculty and staff and their families

DaVinci grants bridge traditional boundaries

Faculty mentors a key to success

BY KARLA CRUISE, ISLA

In recognition of the fact that complex real-world problems — climate change, poverty, war, disease and injustice — rarely occur in convenient, discipline-specific categories, universities are increasingly supporting multidisciplinary research.

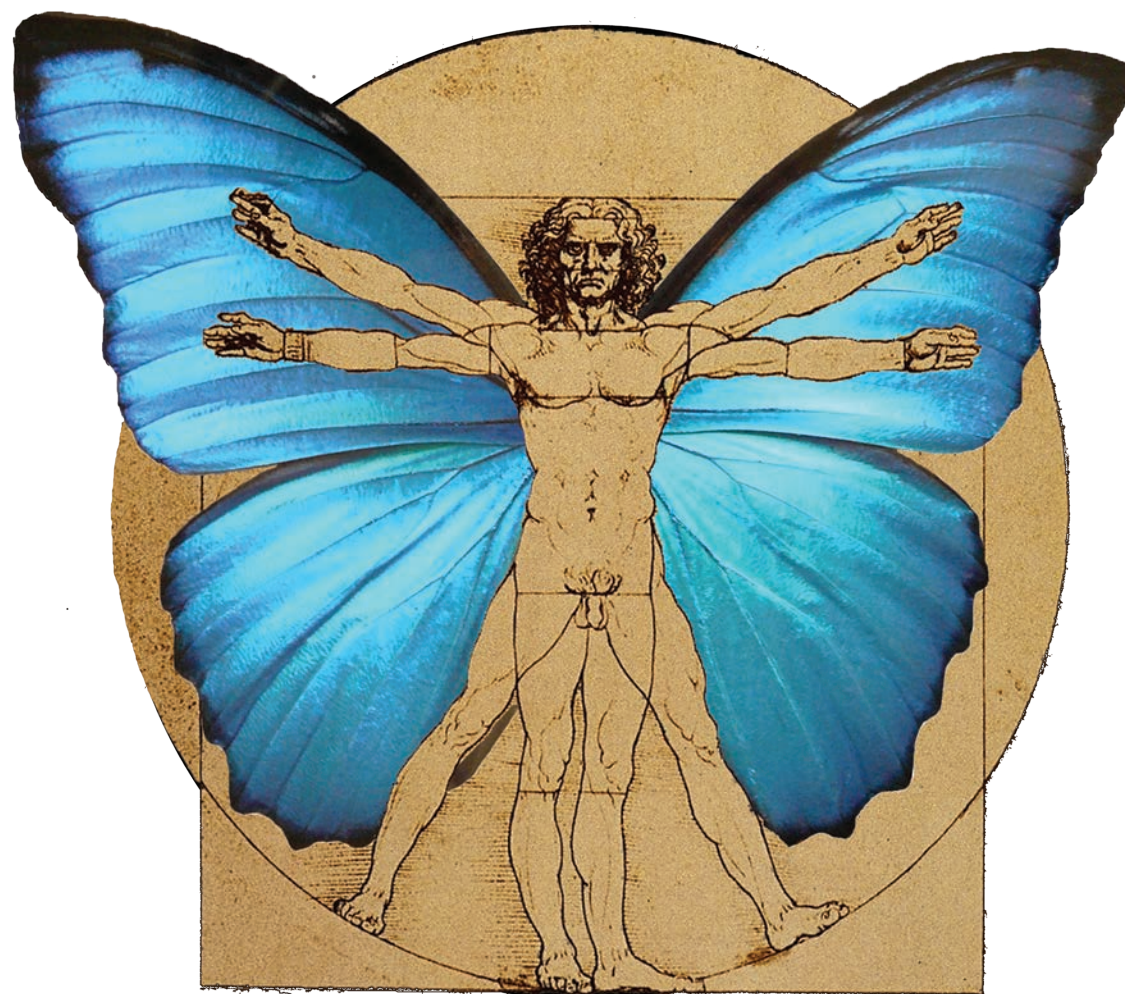
The **Da Vinci Program**, launched jointly by the College of Arts and Letters and the College of Science and administered by the Institute for Scholarship in the Liberal Arts (ISLA), supports research and creative projects that bridge traditional academic boundaries through grants of up to \$4,500 to eligible undergraduates working independently or in teams.

In the program's inaugural year, 2012-13, 44 applications were received, and 11 grants were awarded to students with majors in fields such as anthropology, mechanical and electrical engineering, biology, philosophy and music.

Students crossed departmental boundaries to complete projects on tumor imaging, computational analysis of 19th-century literary texts, biohazard monitoring, religious groups and environmental stewardship, portable diagnostic devices and algebraic geometry's application to engineering problems.

In a project spanning three colleges (and two continents), chemical engineering student **Lauren Fritz** worked with faculty and fellow students in the Department of Film, Television, and Theatre to create a documentary on great white shark conservation efforts in South Africa.

Having faculty mentors whose research and perspectives span multiple fields is key to the program's success.



Institute for Scholarship in the Liberal Arts

Jason McLachlan, professor of biological sciences, pursues research in ecology, statistical modeling and paleoecology with a special focus on the dynamics of plant populations during past and present climate change. McLachlan affirms the importance of interdisciplinary research, even at the undergraduate level.

"All of the challenges faced by society today are cross-disciplinary. If students think they need to master one discipline before tackling the

complex multidisciplinary context of societal challenges, they will be like the proverbial expert with a hammer: Every problem looks like a nail," says McLachlan.

As a concrete example of a multidisciplinary approach to a cross-disciplinary problem, McLachlan points to his research with philosophy major and Da Vinci awardee **Chris Glueck**.

"Laws and regulations in place to conserve species assume that those species remain in their native habitat.

Under changing climate, they will shift to new places where they will no longer be 'native' ... Chris worked with a graduate student [in biology] to understand the range shifts of Harwood's woollystar [an endangered wildflower], and with a law student, to interpret the meaning of established regulations in the novel context of species dispersal. This team couldn't have done the work without the expertise of three disciplines: biology, law and philosophy," says McLachlan.

As Glueck learned, combining

the perspectives and approaches of various fields is not easy. "My project ... required collaboration between lawyers and biologists. These two vastly different disciplines have distinct sets of jargon and accepted practice. As the 'go between,' I was tasked with translation, and while can't say I'm fluent in either law or science, I did help facilitate the dialogue."

Not only are the languages spoken by the different academic areas distinct, their ways of perceiving the world differ as well. As McLachlan puts it, "It seems surprising, but we really 'know' things in a different way. We couldn't have made the translation between fields if we hadn't had Chris as the primary mediator. His training as a philosopher provided him with the skill set to see the commonalities between two fields with common interests but without a common language."

Despite the challenges involved in finding a "common language," professor of psychology and director of the Institute for Scholarship in the Liberal Arts **Thomas Merluzzi** believes in the importance of bringing together the currently independent silos of departmental skills and information.

Says Merluzzi: "We are beginning to see disciplinary barriers break down among the faculty and we want to encourage that creative, broad thinking among our undergraduates. The Da Vinci Program is ISLA's way of strongly affirming the importance of mentored, interdisciplinary research, scholarship and creative works among students from Arts and Letters, Science and Engineering."

Basilica closed for renovation project

Will re-open Jan. 18

BY MICHAEL O. GARVEY, PUBLIC RELATIONS

The Basilica of the Sacred Heart is closed for renovations until Friday, Jan. 17.

According to Basilica rector **Rev. Peter Rocca, C.S.C.**, the project will include the removal of carpeting and the installation of slate tile flooring.

"Since the renovation of the then Sacred Heart Church following the Second Vatican Council, and its subsequent restoration in the early 1990s, the floor of the Basilica has been carpeted," Father Rocca says. "Originally, however, the floor of the Basilica was tile, which provided for a more resonant space, especially for singing and the performance of organ and choral pieces. The removal of the carpeting will enhance the acoustics

in the Basilica and eliminate the need of replacing the carpeting every 10 to 15 years."

Father Rocca says that the Basilica will be open for the Vigil Mass at 5 p.m. Jan. 18 (Saturday).

A schedule of liturgies to be held in the Basilica's Sacred Heart Parish Crypt during the closing may be found online at campusministry.nd.edu.

Prayer service to honor the legacy of Martin Luther King Jr.

University President **Rev. John I. Jenkins, C.S.C.**, will once again host a prayer service to honor the legacy of Martin Luther King Jr. at 11:45 on Monday, Jan. 20, in the Main Building Rotunda. A reception will follow.



Inside >

Congratulations to \$1,000 Winners!

Team 3 takes top prizes in Irish Health Challenge

See Page 7

NEWS BRIEFS

GRACE XING RECEIVES U.S. DEPARTMENT OF ENERGY'S ADVANCED RESEARCH PROJECTS AGENCY-ENERGY GRANT

A team led by **Huili (Grace) Xing**, professor of electrical engineering, has been awarded a \$2,496,428 grant from the U.S. Department



Xing

of Energy's Advanced Research Projects Agency-Energy (ARPA-E) program for projects aimed at developing next-generation power conversion devices that could dramatically transform how power is controlled and converted through the grid. Her project was funded under ARPA-E's "SWITCHES" program, short for "Strategies for Wide-Bandgap, Inexpensive Transistors for Controlling High-Efficiency Systems," whose aim is to lower the cost and improve the efficiency of power electronics.

THREE FACULTY NAMED IEEE FELLOWS

Danny Z. Chen, professor of computer science and engineering; **Martin Haenggi**, professor of electrical engineering; and **J. Nicholas Laneman**, associate professor of electrical engineering

have been named fellows of the Institute of Electrical and Electronics Engineers (IEEE).

Chen, whose research interests encompass the areas of computational geometry and applications, parallel algorithms and robotics, as well as automated medical treatment and diagnosis, was honored by the IEEE for contributions to computational techniques for geometric optimization and medical applications. He has developed a range of ultra-efficient sequential and parallel algorithms for solving fundamental geometric, graphic, combinatorial and optimization problems unique to biomedical imaging and radiation therapies, many of which are being used to improve patient diagnoses and treatment outcomes.

A faculty member since 2000, Haenggi was honored for contributions to the spatial modeling and analysis of wireless networks. Specifically, he has devised advanced models for cellular, cognitive, ad hoc and sensor networks and developed mathematical techniques that permit network performance analyses that explicitly account for the spatial distribution of wireless nodes or users.

Laneman was recognized for contributions to multi-hop relaying and cooperative communication for wireless networks, pioneering new approaches for trading off signal strength and spatial diversity benefits with bandwidth costs when multiple wireless transmitters relay signals for each other to combat multipath propagation effects. Laneman also developed a wireless network testbed, based upon software-defined radio (SDR), to foster the implementation and verification of communications algorithms and to enhance SDR technology.

GRADUATE MOLLY HAYES AWARDED GEORGE MITCHELL SCHOLARSHIP

Molly Hayes, a 2008 graduate, has been awarded a 2014 George Mitchell Scholarship.

Awarded to only 12 people every year, the George Mitchell Scholarship is sponsored by the U.S.-Ireland Alliance. The nationally competitive award is named after the former U.S. Sen. George Mitchell, who served as chairman in the Northern Ireland peace process. The scholarship is designed to connect future American leaders with Ireland, and provides tuition, accommodations, and living and travel stipends.

Hayes, who studied English and Arabic while at Notre Dame, will use the Mitchell Scholarship to pursue a master's degree in Irish literature at the National University of Ireland, Maynooth. She is the first Mitchell Scholar from Notre Dame since 2007.

A native of St. Paul, Minn., Hayes is currently the Kenya Desk Officer at the U.S. Department of State, where she led the Washington-based crisis response management for the September terrorist attack at Westgate mall in Nairobi, Kenya.

Beirne named senior associate director of catering

BY COLLEEN O'CONNOR, FOR NDWORKS

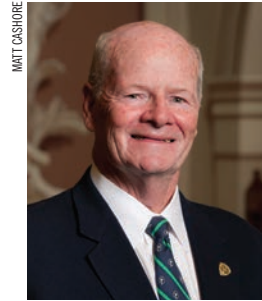
Bill Beirne has been named senior associate director of catering for University Food Services. In this capacity, Beirne provides direction and support to the Catering...by Design team.

"I look forward to developing a professional business and sales culture to enable our staff to provide the highest level of service to our internal campus departments, as well as to our external customers," says Beirne. Additionally, he oversees

all campus retail units and the maintenance department, which is responsible for maintaining all food service equipment campus-wide.

Beirne joined the University in 1998 as assistant general manager of the Morris Inn. He was appointed director of the Morris Inn in 2001, and director of the unified Morris Inn/Notre Dame Conference Center in 2007.

In August 2012, he was named interim director of Food Services following the death of Dave Prentkowsky, and in October 2013 he was named senior associate director of residential operations, overseeing



Beirne

food safety, nutrition and culinary staffs in menu development as well as food production and distribution.

"I am excited for Bill's transition to help lead our catering team," said **Chris Abayasinghe**, director of Food Services. "His extensive experience in the hospitality industry is a welcome addition."

OIT NEWS

New Virus and Phishing Threats

BY LENETTE VOTAVA, OIT

The Office of Information Technologies (OIT) Information Security division wants you to be aware of two serious threats that could potentially damage your files or put your personal information at risk.

Virus that holds your files for ransom

A computer virus called Cryptolocker is on the rise. It prevents you from using your files until you pay a fee, and it can even affect files on network drives like NetFile and CorpFS.

Cryptolocker can infect any computer just by clicking on a link to a malicious website, opening a document from a fake email or clicking a link in a phony FedEx or UPS tracking notice. A computer may also become infected with Cryptolocker if it is currently infected with other viruses or malware.

Protect yourself by following these guidelines:

- Back up your computer regularly.
- Make sure your antivirus software is running on every computer you use and that it updates every day.



- Do not open email attachments that you were not expecting, even if you know the sender.
- Do not open email attachments from senders you do not recognize.

If you receive the Cryptolocker pop-up window, **contact the OIT Help Desk immediately**. The sooner you report the infection, the more likely you can recover your files, especially those located on a network drive.

New round of phishing scams on campus

The OIT has received reports of a variety of phishing scams, including email, phone calls and text messages. These scams use names, logos and formats from businesses or organizations familiar to you (such as local banks).

The phishing scams may indicate there is a problem with your account, and urge you to respond immediately to "verify" or "update" your account. If you click on the link or proceed to the next step and provide the requested information, the cybercriminal can now gain control of your identity, your funds, or your nd.edu email account.

Remember, Notre Dame or any other legitimate organization will NEVER ask for your password, social security number, credit card number or other sensitive information. For examples of phishing scam messages, visit oithelp.nd.edu/email-and-calendaring/phishing/sample-scam-messages/.

If you have any questions, please contact your departmental IT support staff, or the OIT Help Desk at 631-8111, oithelp@nd.edu, or chat at help.nd.edu.

CLARK NAMED NSCAA DIVISION I COACH OF THE YEAR



Men's soccer coach guided program to its first national title

Notre Dame men's soccer coach **Bobby Clark** has been named the National Soccer Coaches Association of America (NSCAA) Division I Coach of the Year. The Fighting Irish defeated Maryland in the national title game to conclude the campaign with a 17-1-6 record.

Clark also guided the Fighting Irish to a share of the Atlantic Coast Conference regular-season title in their first season in the conference. He was also selected as the ACC Coach of the Year. This is the first NSCAA national coach-of-the-year honor for Clark, who just completed his 13th year at Notre Dame.

NDWorks



Publication Dates

- June 20
- July 25
- Aug. 22
- Sept. 19
- Oct. 17
- Nov. 14
- Dec. 12
- Jan. 9
- Feb. 13
- March 20
- April 17
- May 22

Copy deadline is 10 business days prior to the above 2013-2014 publication dates.

CONTACT US @

Have a comment, question or story idea? Contact NDWorks Managing Editor **Carol C. Bradley**, 631-0445 or bradley.7@nd.edu. For questions regarding The Week @ ND or the University calendar, contact Electronic Media Coordinator **Jennifer Laiber**, 631-4753 or laiber.1@nd.edu.



Internal grants programs support research

\$7.4 million awarded since 2007

BY GENE STOWE, FOR NDWORKS

Applications are open until Monday, Feb. 3, for two internal grants programs, the **Library Acquisition Grants Program** and the **Equipment Restoration and Renewal Program**. The Office of the Vice President for Research Internal Grants Program, which also includes faculty research grants, has awarded \$7.4 million since 2007, including 20 awards worth \$1.4 million last year.

Vice President for Research **Bob Bernhard** separated the library acquisitions program from a longstanding equipment program when he arrived, opening more direct access to resources for research materials.

Library Acquisition Grants

Associate Vice President for Research **Hildegund Muller**, who oversees the Library Acquisition Grants Program, said the initiative strengthens Notre Dame's role as a prominent center of scholarship. Awards are usually \$25,000 to \$150,000.

"Unique materials are not cheap," she said. "It can be books, digital materials, manuscripts and typescripts. It can be collections that are pre-existing and come on the market. We want to add to our items that are really significant both for our scholars here at Notre Dame and the way we are perceived in the outside world."

The program has a three-pronged focus:

- Acquiring specialty materials in key areas where the University is already strong, such as theology and English.
- Acquiring unique items that become available, such as the papers, correspondence, manuscript materials or personal possessions of literary authors in different languages, including correspondence among authors.
- Acquiring materials that fill gaps in existing collections related to important areas of scholarship, both for Notre Dame scholars and for others who come to campus for research.

Christopher Fox, director of the Keough-Naughton Institute for Irish Studies, who won a \$30,000 grant last year to purchase the correspondence of Irish Nationalist essayist Robert Lynd, said the materials are critical for bringing top researchers to campus.

"I have to find a way to get scholars to come from Dublin or Boston or San Francisco to South Bend in the middle of winter," said Fox, who has been involved in expanding collections for more than 20 years and saw Notre Dame surpass Harvard in Irish resources a few years ago. "What attracts them is having distinctive library resources."

The materials are also vital for education on campus, he said. "If you have faculty and students here and you don't have the basic library resources for them, you're underusing your resources."

Equipment Restoration and Renewal

"The equipment program has evolved with the establishment of research core facilities such as the Notre Dame Integrated Imaging Facility," said **Rich Taylor**, associate vice president for research, who oversees the program. Grants are available for upgrading equipment in those facilities as well as to individual faculty members or small groups.

"External agencies usually like to see what new types of research directions you're going to take with the latest advanced pieces of equipment," Taylor said. "It becomes difficult to maintain a state-of-the-art level. We're taking dated pieces of equipment and replacing them with what is the current state of the art in that area. We don't have to justify some new area of research. It can be focused on the research we're currently doing."

"There's been a greater interest in having these pieces of equipment go into service facilities so this equipment affects a greater number of researchers including faculty, graduate students and undergraduates."

A \$7 million Strategic Research Investment in the Notre Dame Integrated Imaging Facility five years ago has established a resource with 12 major instruments and a staff of six people, but Equipment Restoration and Renewal grants are vital to maintain and enhance the facility, said **Bradley Smith**, director.

"It brings consistency to the research agenda at the University," Smith said. "This is very, very important. You need to be able to know that in a year or so you'll still have this capability."

Through the Equipment Restoration and Renewal Program, **Greg Snider**, an electrical engineering professor, has obtained a \$150,000 closed-cycle refrigerator that can cool devices to 300 millikelvin, replacing conventional equipment that used liquid helium, the price of which is skyrocketing.

"Doing experiments the way we did 10 years ago has become prohibitively expensive," he said. "Experiments that used to cost us \$1,000, if we tried to do them today, would cost us \$7,000. Now with the closed-cycle refrigerator it will not cost us very much. There are a whole lot of different uses for these systems. We're using it for single-electron device experiments."

The program is not for computers or equipment not directly related to research. Evaluation of applications includes the impact of the research and the plan for maintaining the equipment. "This is potentially a program that could serve people outside of engineering and science with some creative thought," Taylor said. "We'd love to see ideas for pieces of equipment that can enhance research in other areas."

For more information about the internal programs, please contact Heather Boyd, research development program director, or Rich Taylor, associate vice president for research, at intprogs@nd.edu.



Enrollment Division announces reorganization



Future applicant pools will be shaped to meet University strategic goals

FROM THE ENROLLMENT DIVISION, OFFICE OF COMMUNICATIONS

The mission of the **Enrollment Division**, which includes undergraduate admissions, financial aid, student accounts, pre-college and early outreach programs, is to identify, cultivate, recruit and enroll the top Catholic scholars from across the United States and the world. The division strives to increase diversity, first-generation and international students, while at the same time remaining attentive to alumni, student athletes, faculty and staff children and others.

The Enrollment Division recently completed the Office of Human Resources Organizational Analysis and Design (OAD) process, and is in the first year of implementing a three-year reorganization strategy. The focus of the reorganization transforms admissions, financial aid, pre-college and early outreach programs and student accounts. The University will increasingly shape its future applicant pools to align with Notre Dame's strategic goals.

"In an ever more competitive environment among the top universities for the most talented students and leaders, this restructuring provides the University with a dynamic organization designed to be assertive in identifying and engaging the best students around the nation and globe that fit Notre Dame's mission," says **Don Bishop**, associate vice president, undergraduate enrollment.

The division will develop a more sophisticated research-based selection process intended to strengthen the University's tradition of producing thinkers and leaders that will impact the world in their post-Notre Dame careers. The goal will be to advance the quality and diversity of Notre Dame's applicant pool and elevate the University's competitive position among the top 20 universities in the United States.

Several new positions and hires were made over the past year, in addition to realigning other staff responsibilities.

- **Tom Bear**, executive director of student financial strategies
- **Sue Brandt**, director of strategic services
- **Kristin Butz**, associate director of financial aid
- **Ashley Carlin**, assistant director, early outreach and engagement recruitment
- **Alicia Coates**, director of early outreach and engagement recruitment
- **Renate Crawford**, director of engagement for academic recruitment
- **Cindy Santana Cubillo**, event specialist
- **Paulette Curtis**, faculty director of pre-college programs and the AnBryce Scholarship Program
- **Alisa Fisher**, senior associate director of admissions
- **Joyce Lantz**, director of recruitment and communications
- **Brian Lohr**, director of admissions operations and management
- **Paul Mueller**, director of enrollment division research
- **Mary Nucciarone**, director of financial aid
- **Gene Pilawski**, director of student accounts
- **Kelly Pratt**, program coordinator, pre-college programs
- **Karen Putt**, associate director for alumni and parent relations
- **RaeLee Ray**, program coordinator, pre-college programs
- **Rev. Doug Smith, C.S.C.**, director of operations and finance
- **Geoff Young**, associate director of communications

For more information on the Enrollment Division, please visit enrollmentdivision.nd.edu.

Green belt project enhances endowment reporting

Focusing on process improvements

BY ANGELA KNOBLOCH,
CONTINUOUS IMPROVEMENT

Each fall, the **Office of Stewardship Programs** sends more than 3,000 endowment reports on 13 different types of endowed funds (e.g., scholarships, fellowships, endowed professorships, library collections, etc.) to University benefactors.

Historically, report generation was performed manually, resulting in the involvement of more than 400 fund administrators across campus, 11 internal team members, excessive review procedures and rework, inconsistent methods of production and a total cycle time that often extended nearly nine months.

As the volume of endowment reports was expected to increase exponentially in coming years due to increased fundraising, the slow process was simply unsustainable.

"I had participated in a previous green belt project through the Office of Continuous Improvement and had seen the benefits of utilizing the green belt methodology to improve a process," says **Katherine Lane**, office director, "This was an opportunity for **Mary Fisher** (assistant director) and me to learn the tools firsthand,

and to make a huge impact on the stewardship team and Notre Dame donors."

While identifying the many challenges and solutions associated with this project, Lane and Fisher partnered closely with colleagues across campus from units including Accounting, the Controller's Office, the Office of Information Technologies and the Office of Financial Aid.



Lane

They also partnered within their department, relying heavily on the Development Information Services team. As they worked on the project, they introduced elements of fun by adding a project

mascot and humor. This lighthearted component enhanced teamwork and helped to create an atmosphere where change could be embraced. Together they found solutions for the collection of data, report generation, storage of data and more.

In 2012, endowment reports were mailed throughout the semester with the final mailing Dec. 20. This year, as a result of the Green Belt project, 3,300 endowment reports were mailed to University donors on Nov. 13.

Additional results include:

- The cycle time from the initial request to fund administrators for spending impact information to completed statements was reduced from an average of 244 to 105 workdays.
- The cycle time for finalizing financial data was reduced from 66 workdays to an average of 31 workdays.
- By sending all reports at once and combining multiple reports into one package for benefactors with more than one endowment, donor stewardship was greatly enhanced.
- The number of endowment reports produced increased from 2,950 in 2012 to 3,300 in 2013, with the same number of staff members and fewer work hours. (The expectation in 2014 is to mail 3,650 reports.)

The **Office of Continuous Improvement** grants Green Belt Certification to University employees who have completed needed training and project requirements. Lane and Fisher will receive their Green Belts in mid-January.

The Office of Continuous Improvement offers Green Belt classroom training along with coaching support to enable participants to deliver process improvement results. For additional information, contact **Carol Mullaney**, 631-1293 or mullaney.13@nd.edu.

SERVICE ANNIVERSARIES

The University congratulates those employees celebrating significant service anniversaries in **January**:

35 years

Cheryl A. Reed, DCL Services

30 years

Charles R. Lamb, Archives
Dian H. Murray, History

25 years

Peggy M. Buraczewski, Registrar
Michelle L. Kovacs, College of Engineering
Christeena Listenberger, Hesburgh Libraries
Patrick L. O'Hara, Warehouse Manager
Mei X. Zhang, Custodial Services

20 years

Robert S. Appleby, History
Annette L. Beck, Office of Housing
David A. Clairmont, Theology
Amanda Huerta, Chemistry and Biochemistry
Mary M. Keys, Political Science
Barbara A. Lockwood, Kroc Institute for International Peace Studies
Diana L. Makielski, Food Services, Support Facilities, Production
Fernita R. Martin, Admissions
Andrew J. McShane, Campus Ministry
Nita M. Minix and **Susan K. Sheets**, Food Services, North Dining Hall

15 years

Linda E. Doversberger, Hesburgh Libraries
Carol L. Grontkowski, Business Process Advisory Services
Sharon V. Hawkins, Office of Human Resources
Mary M. Hendriksen, Graduate School
Vittorio G. Hösele, German and Russian Languages and Literatures
Elizabeth Kresnak, Accounting and Financial Services
Wendy M. Noecker, Law School Admissions
Kathleen C. Opel, Off-Campus Programs
Victoria L. Reeder, Development, Donor Services

10 years

Phillip H. Bess, School of Architecture
Elvo F. Bucci and **Bruce A. Danielson**, Development
Robert L. Essig, Marketing
Audrey Fletcher, Freimann Animal Care Facility
Colin P. Jessop, Physics
Kevin B. Jones, Maintenance
John D. LaDue, Law School
Gregory Larson, Food Services, North Dining Hall
Jeanie M. Martz, Career Center
Robert Nerenberg, Civil Engineering and Geological Sciences
Rosemary Salinas, Psychology
Janet L. Swain, Alliance for Catholic Education
Joseph B. Wheeler, LaFortune Student Center
Sauna L. Williams, Romance Languages and Literatures

Hesburgh Libraries launch Center for Digital Scholarship

'A transformational leap into the future'

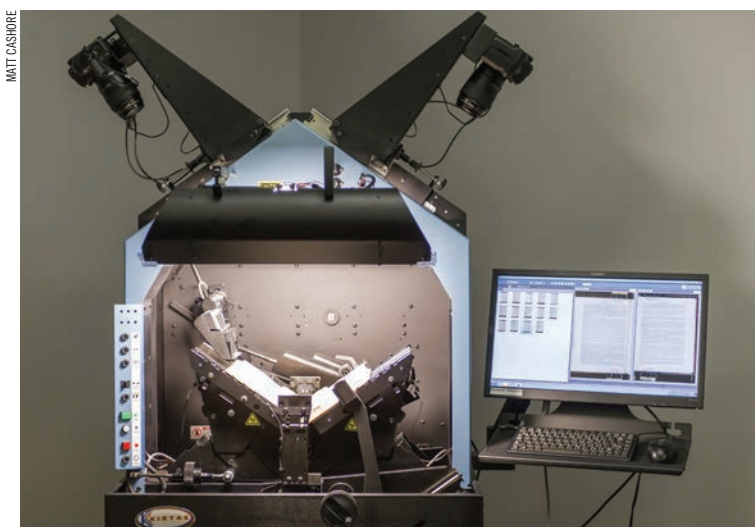
BY TARA O'LEARY,
HESBURGH LIBRARIES

The Hesburgh Libraries have officially launched the **Center for Digital Scholarship**, located in the northeast corner of the first floor of the Hesburgh Library.

The launch marks a transformational leap into the future for the Hesburgh Libraries, and helps to meet the University's growing demand for advanced research expertise and digital library services.

Digital scholarship employs state-of-the-art technologies to transform the ways in which teaching, research and scholarship are performed and preserved.

"The integrated expertise in the center offers the support needed for the full life cycle of research as we know it in the digital age," says **Tracy Bergstrom**, program co-director for Digital Initiatives and Scholarship within Hesburgh Libraries. "The Libraries envision the Center for Digital Scholarship as the place



A Kirtas robotic bound-document scanner is available in the new Center for Digital Scholarship.

where technology will transform the pursuit of knowledge."

The center features two separate yet synergistic components. The 5,200-square-foot Digital Research Lab is home to a new generation of digital librarians who are experts in areas such as data management planning, geographic information systems, digitization and metadata

services, and data use and analysis.

It offers an extensive suite of hardware and software and access to a 3-D printer, a large-format color printer, a high-tech conference room and a flipped classroom. The 900-square-foot Digital Production Facility features state-of-the-art digitization equipment and will make a significant impact on the

NEW EMPLOYEES

The University welcomes the following employees who began work in **November**:

Zachariah M. Allen, Marketing Communications
Ashley Bennitt, Payroll Services
Cynthia S. Cubillo, Enrollment Division
Randy L. Denton, Catering...by Design
Jonathan Hannah, Foundation Relations
Orlando J. Mendez and **Michelle White**, Aerospace and Mechanical Engineering
Roger Mota-Vega, North Dining Hall
Kimberly Patton, Graduate School

Cindy A. Pell and **Larry J. Westfall**, Career Professional Development
Lauren Plennert, Audit and Advisory Services
Brian F. Pracht, Athletics Event Marketing and Ticketing
Jonathan R. Retartha, Annual Giving Programs
Jessica L. Schiller, Financial Aid
Stephanie M. Shaw, Customer Support Services, OIT
Shivande Stanley, Office of VP Research
Melissa Williams, Master of Science in Business

University's ability to preserve and globally share rare materials that are unique to Notre Dame.

Says **Elliott Visconsi**, chief academic digital officer, "The word scholarship in the center's name recalls for us the identity that binds us together as a community. A scholar is a creator of new knowledge—a part of a living intellectual community that stretches across time and space. The

expert staff and the digital resources gathered in the center will accelerate knowledge creation by moving students and faculty further into our work, unlocking our creativity and giving our research new force and speed."

More information is available at library.nd.edu/cds.

The Arts

at Notre Dame

For tickets to events at the DeBartolo Performing Arts Center, visit performingarts.nd.edu and create an account or log in to view faculty/staff and student discounted ticket prices, or contact the ticket office, 631-2800. Ticket prices listed are the faculty/staff/student rate.

MUSIC

June H. Edwards Chamber II: Beethoven Beethoven Beethoven
South Bend Symphony in the Leighton Concert Hall
Sunday, Jan. 12, 3 p.m.; \$17/\$8
An afternoon of music featuring Coriolan Overture Op. 62, "Musik zu einem Ritterballet" and Symphony No. 2 in D major Op. 36.

Presenting Series
Kenny Barron Trio in the Leighton Concert Hall
Saturday, Jan. 18, 6:30 p.m.; \$32/\$10
Anointed by "Jazz Weekly" as "the most lyrical piano player of our time," Kenny Barron and his stellar trio (featuring Ray Drummond on bass and Ben Riley on drums) will hold down—or tear up—the Leighton Concert Hall stage.

Barry Jordan organ recital
Sunday, Jan. 19, 2:30, 5 p.m.,
Reyes Organ and Choral Hall;
Free but ticketed
O'Malley Sacred Music Series presents two performances by South African-born Jordan, a conductor, organist and choral director of Germany's Magdeburg Cathedral.

Third Coast Percussion
Sunday, Jan. 26, 2 p.m.
Leighton Concert Hall; \$27/\$10
The simplest of ideas lead to extraordinary musical statements in a program featuring the world premiere of a new work by Timothy Andres

titled "Austerity Measures." Andres describes his new work as a "string quartet for percussion." Notre Dame faculty member **Carmen-Helena Téllez** and the vocalists from the Sacred Music Program join Third Coast for a performance of Steve Reich's iconic Proverb. The piece, for five singers and four percussionists, is set to a single line of text from philosopher Ludwig Wittgenstein: "How small a thought it takes to fill a whole life."

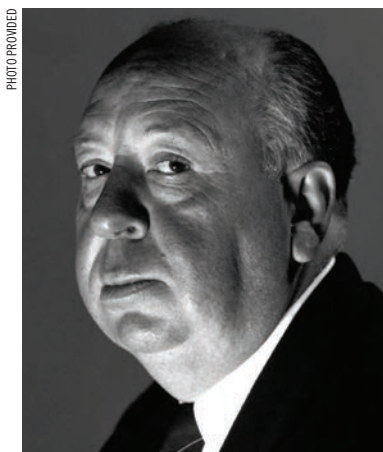
THEATER

L.A. Theatre Works presents The Graduate
7 p.m. Thursday and Friday, Feb. 13 and 14, and 7:30 p.m. Saturday, Feb. 15
Patricia George Decio Theatre; \$27/\$10
L.A. Theatre Works revives the book-turned-landmark 1967 film. The still fresh and funny coming-of-age story about the seduction of naive college grad Benjamin Braddock by an impassive cougar crackles featuring dialogue with razor-like timing.

FILM

Browning Cinema, DeBartolo Performing Arts Center
Films are \$6 for faculty/staff unless otherwise noted.

The series of Alfred Hitchcock's greatest films continues on Wednesday nights through April. Visit performingarts.nd.edu for details.



Hitchcock

Classic Films: Hitchcock Series
8 p.m. Wednesday, Jan. 15, **The Lodger** (1926), described by Hitchcock himself as "the first true Hitchcock movie." The silent thriller is set in a fog-bound London terrorized by a Jack the Ripper-style murderer known only as The Avenger.

Downhill (1927), 8 p.m. Wednesday, Jan. 22, is the darkest of Hitchcock's early films, following the fall from grace of a public schoolboy who is expelled for getting a girl pregnant and subsequently disowned by his father.

Double Feature: Blackmail (1929), 8 p.m. Wednesday, Jan. 29. One of the best British films of the late 1920s, "Blackmail" was produced during the transition to the sound era. Czech actress Anny Ondra plays Alice White, a young woman whose brief flirtation with an artist turns suddenly and terribly sour. The 75-minute silent version

with live piano accompaniment by Nick Lieshout '17 will be followed by the 85-minute sound version.

ALSO AT THE BROWNING

Robert Redford's 2013 open-water thriller **All is Lost** will be screened in five showings Friday and Saturday, Jan. 17 and 18. **Herman's House** (2012), 3 p.m. Sunday, Jan. 19, tells the story of the man who may be the longest-serving prisoner in solitary confinement in the U.S.

The Before Trilogy
Celebrate Valentine's Day, Friday, Feb. 14, with Richard Linklater's **The Before Trilogy**, which follows Céline and Jesse, whose journey has been slowly and fascinatingly unfolding over the past 18 years. Linklater's thoroughly modern love story follows the couple from their momentous first meeting on a European train and an eventful night in Vienna, through a real-time walk through Paris, and finally, an idyllic yet soul-searching denouement in the south of Greece. **Before Sunrise** (1995), 5:30 p.m.; **Before Sunset**, 7:30 p.m.; **Before Midnight**, 9:30 p.m. Discount admission available on tickets purchased to two of more films in the trilogy.

The Met: Live in HD presents an encore performance of **Falstaff** at 1 p.m. Saturday, Jan. 23; \$23

National Theatre Live presents **Coriolanus**, Shakespeare's searing tragedy of political manipulation and revenge, at 7 p.m. Thursday, Jan. 30, and 3 p.m. Saturday, Feb. 1; \$18

SNITE MUSEUM OF ART

New exhibitions opening at the Snite Museum of Art Sunday, Jan. 12, include:

The Artist's View: Landscape Drawings from the Crocker Art Museum

Spanning four centuries, this exhibition organized by the Crocker Art Museum in Sacramento celebrates the inspiration that nature has provided to European artists and the beauty of the drawings that resulted.

No Little Art: Dürer's Apocalypse and Northern Renaissance Prints

An exhibition marking the recent acquisition of the German Renaissance artist Albrecht Dürer's seminal woodcut series "The Apocalypse."

Ornament Doesn't Need Little Flowers: Anton Würth and Engraving in the 21st Century

German printmaker and book artist Anton Würth (b. 1957) challenges conventional concepts of decoration.

IN THE SPOTLIGHT: INTERGALACTIC NEMESIS



A sci-fi comic book comes to life as a vintage radio play the *Austinist* describes as "totally nuts and a ton of fun!" Three actors, retro Foley sound effects and a live keyboard score send you careening through an otherworldly adventure. With projected comics soaring above the stage, a full day of *Nemesis* satisfies in two giddy parts.

Intergalactic Nemesis Book 1: Target Earth Family Performance—ALS interpreted

2 p.m., Saturday, Feb. 1
Patricia George Decio Theatre;
Family pricing \$10;
best for ages 8 and up.
It's 1933, and Pulitzer Prize-winning reporter Molly Sloan and sidekick Timmy

Mendez stumble into a plot by sinister sludge monsters from the Planet Zygon to take over Earth. To stop it, a ragtag group of heroes take the fight all the way to Planet Zygon.

Intergalactic Nemesis Book 2: Robot Rising

7:30 p.m., Saturday, Feb. 1
Patricia George Decio Theatre; \$15;
best for ages 8 and up.
The battle is rejoined. Now, Molly Sloan must try to rescue a robot emissary, Timmy grapples with his newfound powers and a Soviet spy hunts the good Dr. Webster. It's what you would expect from a sequel—bigger, a more complex story and new, darker characters.



Recsports.nd.edu

Registration for spring Fitness, F.A.S.T. (Faculty & Staff Training) and Instructional classes begins 7:30 a.m. Thursday, Jan. 16, via RecRegister. Registration continues throughout the semester if space is available in the class.

Try It, You'll Like It Week — Drop into any fitness or F.A.S.T. (Faculty & Staff Training) for free from Jan. 13–19. Use your ND ID to gain facility access and bring it to class to participate. Class size is limited; please arrive early.

General Facility Hours

Effective Monday, Jan. 13 – Wednesday, April 30. All RecSports facilities will be closed Spring Break (March 8 – 16) and the Easter holiday. Schedules are subject to change. See website for hours of operation during breaks, holidays and special campus events.

Rolfs Sports Recreation Center

631-3068
 Mondays – Thursdays: 5:45 a.m. – Midnight
 Fridays: 5:45 a.m. – 11 p.m.
 Saturdays: 9 a.m. – 11 p.m., Family Hours 9 a.m. – Noon
 Sundays: noon – midnight, Family Hours Noon – 2 p.m.

Rockne Memorial

631-5297
 General Building
 Mondays – Thursdays: 6 a.m. – Midnight
 Fridays: 6 a.m. – 11 p.m.
 Saturdays: 10 a.m. – 11 p.m., Family Hours 2 – 5 p.m.
 Sundays: 10 a.m. – 11 p.m., Family Hours 2 – 5 p.m.

Rockne Pool

Mondays – Fridays: 6 – 9 a.m., 11:30 a.m. – 6:30 p.m.
 Saturdays: 1 – 6 p.m.
 Sundays: Closed

Rockne Weight Room

Mondays – Thursdays: 7 – 8:30 a.m., 3:30 – 11 p.m.
 Fridays: 7 – 8:30 a.m., Noon – 1:30 p.m., 3:30 – 11 p.m.
 Saturdays – Sundays: 3:30 – 11 p.m.

Rockne Climbing Wall

Mondays – Thursdays: 6 – 10 p.m.
 Fridays – Saturdays: Closed
 Sundays: 2 – 6 p.m.

Rolfs Aquatic Center

631-5980
 Mondays – Thursdays: 9:30 a.m. – 2 p.m., 8 – 10 p.m.
 Fridays: 11 a.m. – 2 p.m., 8 – 9 p.m.
 Saturdays: Closed
 Sundays: 1 – 6 p.m., Family Hours 2 – 5 p.m.

F.A.S.T. (Faculty and Staff Training)

Open to employees, spouses and retirees. Classes meet Jan. 6 through May 16. Classes will meet during Spring Break, March 8 – 16. Schedules are subject to change. Full refunds for fitness and F.A.S.T. classes will be issued until Sunday, Jan. 26, at 10 p.m.; half-price refunds will be issued until Sunday, Feb. 2, at 10 p.m. Schedules are subject to change.

Mondays				
9 – 10 a.m.	Zumba	Kimmi	RSRC AR 1	\$30
12:15 – 12:45 p.m.	Cycle Express	Tabb & Dawn	Rockne B026	\$50
12:15 – 12:45 p.m.	Cardio Express	Bre	RSRC AR 2	\$25
4:15 – 5 p.m.	Cardio Sculpt	Bre	RSRC AR 1	\$25
Tuesdays				
9 – 10 a.m.	Cardio Sculpt	Indiana	RSRC AR 2	\$30
12:15 – 12:45 p.m.	Zumba	Maria	RSRC AR 1	\$25
12:15 – 12:45 p.m.	Flex N Tone	Indiana	RSRC AR 2	\$25
Wednesdays				
9 – 10 a.m.	Yoga	Steve	RSRC AR 1	\$70
12:15 – 12:45 p.m.	Cardio Express	Indiana	RSRC AR 2	\$25
Thursdays				
9 – 10 a.m.	Cardio Sculpt	Indiana	RSRC AR 2	\$30
12:15 – 12:45 p.m.	Flex N Tone	Indiana	RSRC AR 2	\$25
Fridays				
9 – 10 a.m.	Pilates Mat	Patty	RSRC AR 1	\$70
12:15 – 12:45 p.m.	Cardio Express	Indiana	RSRC AR 2	\$25

24-Hour Spin-A-Thon

RecSports is pleased to be teaming up once again with Notre Dame Women's Basketball and the College of Science in this breast cancer benefit event.



Join our 24-Hour Pink Zone Spin-A-Thon at Rockne Memorial Cycling Studio noon Friday, Feb. 7, through noon Saturday, Feb. 8. Registration will be available online via RecRegister in January. Choose your time slot and you're all set! Donations are always welcome and may be made during online registration.

Spring Fitness

Classes meet Jan. 20 through April 30. No classes during Spring Break, March 8 – 16. Schedules are subject to change. Full refunds for fitness and F.A.S.T. (Faculty & Staff Training) classes will be issued until Sunday, Jan. 26 at 10 p.m.; half-price refunds will be issued until Sunday, Feb. 2 at 10 p.m. Schedules are subject to change.

Mondays				
6:15 – 7 a.m.	Sunrise Cycle	Indiana	Rockne B026	\$50
11 – 11:45 a.m.	Gentle Healthy Toning	Patty	RSRC AR 1	\$25
5:30 – 6:15 p.m.	Poolates Combo	Patty	Rockne Pool	\$25
5:30 – 6:15 p.m.	Indoor Cycling – 45	Angela	Rockne B026	\$50
5:30 – 6:30 p.m.	Zumba	Katie F.	RSRC AR 1	\$25
5:30 – 6:30 p.m.	Cardio Kickboxing	Lisa	RSRC AR 2	\$25
5:30 – 6:30 p.m.	Yoga	Steve	Rockne 205	\$60
6:45 – 7:45 p.m.	Pilates Mat	Patty	Rockne 205	\$60
6:45 – 7:45 p.m.	Body Sculpt	Annie S.	RSRC AR 1	\$25
6:45 – 7:45 p.m.	Cardio Core	Cindy	RSRC AR 2	\$25
Tuesdays				
6 – 7 a.m.	Power Yoga	Steve	RSRC AR 1	\$60
12:15 – 12:45 p.m.	Cycle Express	Lisa	Rockne B026	\$50
5:30 – 6:15 p.m.	Indoor Cycling – 45	Annie K.	Rockne B026	\$50
5:30 – 6:30 p.m.	20/20/20	Cindy	RSRC AR 1	\$25
5:30 – 6:30 p.m.	Cardio Bootcamp	Indiana	RSRC AR 2	\$25
5:30 – 6:30 p.m.	Pilates Mat	Bridgette	Rockne 205	\$60
6:45 – 7:15 p.m.	Tabata Plus	Lauren	RSRC AR 2	\$25
6:45 – 7:45 p.m.	Zumba	Jennifer	RSRC AR 1	\$25
Wednesdays				
6:15 – 7 a.m.	Sunrise Cycle	Indiana	Rockne B026	\$50
Noon – 1 p.m.	Yoga	Steve	RSRC AR 1	\$60
5:30 – 6:15 p.m.	Poolates Combo	Patty	Rockne Pool	\$25
5:30 – 6:15 p.m.	Indoor Cycling – 45	Angela	Rockne B026	\$50
5:30 – 6:30 p.m.	Zumba	Michelle	RSRC AR 1	\$25
5:30 – 6:30 p.m.	Body Sculpt	Alyssia	RSRC AR 2	\$25
5:30 – 6:30 p.m.	Yoga	Steve	Rockne 205	\$60
6:45 – 7:45 p.m.	Power Yoga	Katie O.	Rockne 205	\$60
6:45 – 7:45 p.m.	Cardio Core	Indiana	RSRC AR 1	\$25
6:45 – 7:45 p.m.	Pure Barre	Bre	RSRC AR 2	\$25
Thursdays				
6 – 7 a.m.	Yoga	Steve	RSRC AR 1	\$60
5:30 – 6:15 p.m.	Indoor Cycling – 45	Lisa	Rockne B026	\$50
5:30 – 6:30 p.m.	Cardio Kickboxing	Indiana	RSRC AR 1	\$25
5:30 – 6:30 p.m.	Hip-Hop Sculpt	Stephanie	RSRC AR 2	\$25
5:30 – 6:30 p.m.	Power Yoga Flow	Steve	Rockne 205	\$60
6:45 – 7:15 p.m.	Tabata Plus	Cindy	RSRC AR 2	\$25
6:45 – 7:45 p.m.	Zumba	Jennifer	RSRC AR 1	\$25
Fridays				
6:15 – 7 a.m.	Sunrise Cycle	Indiana	Rockne B026	\$50
Noon – 1 p.m.	Yoga	Steve	RSRC AR 1	\$60
5:30 – 6:30 p.m.	Cardio Core	Megan	RSRC AR 2	\$25
Saturdays				
Meets for six weeks Jan. 25 – March 1				
12:15 – 12:45 p.m.	Ab Blast	Bre	RSRC AR 2	\$12
12:15 – 1:15 p.m.	Yoga	Steve	Rockne 205	\$30
1:30 – 2:30 p.m.	Cardio Bootcamp	Indiana	RSRC AR 2	\$12
Sundays				
1:30 – 2:15 p.m.	Indoor Cycling – 45	Annie K.	Rockne B026	\$50
1:30 – 2:30 p.m.	20/20/20	Megan	RSRC AR 2	\$25
2:45 – 3:45 p.m.	Pi Yoga	Patty	RSRC AR 1	\$60
2:45 – 3:15 p.m.	Pure Barre	Bre	RSRC AR 2	\$25
4 – 5 p.m.	Zumba	Katie F.	RSRC AR 1	\$25

Children's Swim Lessons

Classes are offered every semester at Rockne Memorial Pool. Swim assessments are mandatory for first-time registration of children 3 years and older. A large swim assessment night is held prior to the first session registration date. Schedules are subject to change.

Swim Assessment Friday, Jan. 24, 5:30 – 6:30 p.m. Rockne Memorial Pool. No registration necessary for assessment. Free.

Session I

ND Registration opens 9 a.m. Monday, Jan. 27; public registration opens 9 a.m. Monday, Feb. 3. Mondays and Wednesdays 4:30 – 5:30 p.m. Meets Feb. 10, Feb. 12, Feb. 17, Feb. 19, Feb. 24, Feb. 26, March 3, March 5 \$50
 Saturdays 11 a.m. – 2 p.m. Meets Feb. 8, Feb. 15, Feb. 22, March 1 \$30
 Sundays 11 a.m. – 2 p.m. Meets Feb. 9, Feb. 16, Feb. 23, March 2 \$30

Session II

ND Registration opens 9 a.m. Monday, March 10; public registration opens 9 a.m. Monday, March 17. Mondays and Wednesdays 4:30 – 5:30 p.m. Meets March 24, March 26, March 31, April 2, April 7, April 9, April 14, April 16 \$50
 Saturdays 11 a.m. – 2 p.m. Meets March 22, March 29, April 5, April 12 \$30
 Sundays 11 a.m. – 2 p.m. Meets March 23, March 30, April 6, April 13 \$30

For Families

Even Fridays events
 5:30 – 7:30 p.m., please register online via RecRegister in advance.

- Jan. 17
Martial Arts Night
 Rockne Memorial 209
- Jan. 31
Curling Clinic
 Compton Family Ice Arena
- Feb. 14
Bowling Night
 Strikes & Spares
- Feb. 28
Tae Kwon Do
 Rockne Memorial 209
- March 14
Cooking Night
 Rolfs Sports Recreation Center
- March 28
Family Skate (part of Relay for Life)
 Compton Family Ice Arena
- April 11
Rugby Clinic
 Stinson Field
- April 18
Outdoor Sports Fest
 Rockne Memorial Lawn

For more information
or to register via RecRegister,
visit recsports.nd.edu

Instructional Series

Classes meet for series of weeks. No classes during Spring Break, March 8 – 16. Schedules are subject to change.

Dance Series

Beginner Ballet					
Mondays 7:55 – 8:50 p.m.	JoAnn	RSRC AR 2	Jan. 27 – April 14	\$45	
Intermediate Ballet					
Mondays 8:55 – 9:50 p.m.	JoAnn	RSRC AR 2	Jan. 27 – April 14	\$45	
Beginner Ballet					
Wednesdays 7:55 – 8:50 p.m.	JoAnn	RSRC AR 2	Jan. 29 – April 16	\$45	
Hip-Hop Dance					
Wednesdays 8 – 9 p.m.	Bre	RSRC AR 1	Jan. 29 – April 16	\$45	
Intermediate Ballet					
Wednesdays 8:55 – 9:50 p.m.	JoAnn	RSRC AR 2	Jan. 29 – April 16	\$45	
Partner Latin Dance					
Thursdays 8 – 9 p.m.	Ramzi	RSRC AR 1	Jan. 30 – April 17	\$45	

Martial Arts Series

Tai Chi					
Mondays 5:30 – 6:30 p.m.	Br. Ray	Rockne 109	Jan. 27 – April 14	\$45	
Brazilian Jiu Jitsu					
Mondays 8 – 9 p.m.	Wally	Rockne 109	Jan. 27 – April 14	\$45	
Beginner Karate					
Tuesdays 6:30 – 7:30 p.m.	Matt	Rockne 109	Jan. 28 – April 15	\$45	
Advanced Karate					
Thursdays 6:30 – 7:30 p.m.	Matt	Rockne 109	Jan. 30 – April 17	\$45	

TRX Suspension Training Series

Tuesdays 5:30 – 6:15 p.m.	Ed	Rockne 109	Jan. 28 – March 4	\$25	
Wednesdays 6 – 6:45 p.m.	Tabb	Rockne 109	Jan. 29 – March 5	\$25	
Fridays 12:15 – 1 p.m.	Mac	Rockne 109	Jan. 31 – March 7	\$25	
Tuesdays 5:30 – 6:15 p.m.	Ed	Rockne 109	March 18 – April 22	\$25	
Wednesdays 6 – 6:45 p.m.	Tabb	Rockne 109	March 19 – April 23	\$25	
Fridays 12:15 – 1 p.m.	Mac	Rockne 109	March 21 – April 25	\$25	

Sports Series

Beginner Tennis					
Tuesdays 7 – 8 p.m.	Jennie	Eck Tennis Courts	Jan. 28 – March 4	\$45	
Advanced Beginner Tennis					
Tuesdays 7 – 8 p.m.	Jennie	Eck Tennis Courts	March 25 – April 29	\$45	

Certification Series

Lifeguard Instructor					
Wednesdays 4 – 6 p.m.	Sarah	Rockne 110	Feb. 5 – April 16	\$200	
Lifeguard Training					
Wednesdays 6 – 9 p.m.	Sarah	Rockne 110	Feb. 5 – April 16	\$125	
Water Safety					
Thursdays 6 – 9 p.m.	Sarah	Rockne 110	Feb. 6 – April 17	\$150	
S.C.U.B.A.					
Sundays 3:30 – 7:30 p.m.	Kathy & Diane	Rockne 110	Feb. 6 – April 17	\$150	

Wellness Series

Pre/Post-Natal Yoga					
Saturdays 1 – 2 p.m.	Sue	RSRC AR 1	Jan. 11 – Feb. 22	\$30	
Saturdays 1 – 2 p.m.	Sue	RSRC AR 1	March 15 – April 19	\$30	

Personal Training

Hiring a personal trainer can be a great way to make a real change in your life at the start of this new year. A trainer can help you improve your confidence in physical activity and exercise participation by designing a fitness program specifically for you. By keeping you accountable, your trainer will help you to reach your goals through fun and challenging workouts.

Intramural Sports

Spring sports include: 4 x 4 Flag Football, Battleship, Indoor Tennis Singles, Volleyball, Wiffleball, Badminton Doubles Tourney, Curling, Floor Hockey, Softball, Soccer and Sand Volleyball. Register online with IMLeagues.com, log in with ND net ID and password to create or join a team. When your sport registration period is open, invite your friends to play online and pay in person at Rolfs Sports Recreation Center the next day.

CONGRATULATIONS TO \$1,000 WINNERS

Congratulations to this year's \$1,000 winners in the Irish Health Challenge! Five members of the winning **Team 3** (Campus Services, Facilities Design & Operations, Finance and OIT) and one member of the remaining teams were drawn at random to receive the prizes.

2013 was a record year: 2,733 faculty and staff completed a health screening and **Your HRQ** to be eligible for the prizes—an increase of more than 12 percent over 2012. Thank you!



Cori Hunt
Custodial Services, Custodian



Saida Islamovic
Custodial Services, Custodian



JoRae Mears
Office of Maintenance, Maintenance Technician



Nancy Milliken
DCL Services, Production Assistant



Aubrey Parks
University Health Services, Registered Nurse



Melisa Wroblewski
Custodial Services, Custodial Crew Leader

NOTRE DAME AND SAINT MARY'S IRISH DANCE TEAM

The Notre Dame and Saint Mary's Irish Dance Team competed with Irish step dancers from all over the world at the All-Ireland Championships in Belfast, Northern Ireland, in November. The team won the All-Ireland Championships for the third consecutive year. Coached by Connor T. Reider, ND '14, the team members are Kelly McGovern, ND '14; Lauren Kepley, SMC '14; Anne Marie Crowell, ND '14; Katie Herman, SMC '14; Grace Deardurff, ND '14; Cathy Cichon, ND '14; Mary Kate McGloughlin, SMC '15; and Katy Wabl, ND '16.



The Big Job of SNOW REMOVAL

Here's what it takes to keep campus clear of snow each winter



3 2 1/2-Ton Dump Trucks



1 2 1/2-Ton Salt Truck



2 Caterpillar front end loaders to move piles of snow in parking lots



2 1 1/2-Ton Trucks to plow and salt campus roads



8 1/2-Ton Pickup Trucks 1 for putting down liquid ice melt and 7 to plow parking lots



8 Bobcat Toolcats for clearing sidewalks



1 Toro Polartec for clearing small sidewalks



... plus Building Services staffers who shovel building entrances and steps

2 People who shovel steps out of parking lots



... and 500 TONS of salt